

Operators Manual & Parts List

SWIFT ROLLERMOWERS

MJ71-190, MJ71-190FM
MJ71-240, MJ70-240FM

MJ71-540
MJ71-400
MJ71-340



SWIFT S2

Head Office

Major Equipment Intl. Ltd.
Ballyhaunis,
Co. Mayo,
Ireland.

Tel.: +353 (0) 9496 30572
Fax: +353 (0) 9496 30788
Email: info@major-equipment.com

UK Office

Major Equipment Ltd.
Major Industrial Estate,
Middleton Rd.,
Heysham,
Lancs.
LA3 3JJ

Tel.: +44 (0) 1524 850 501
Fax: +44 (0) 1524 850 502
Email: ukinfo@major-equipment.com

NETHERLANDS & GERMANY OFFICE

Major Equipment Intl. Ltd.
Postbus 29,
NL-7700 AA ,
Dedemsvaart,
Nederland.

Tel: +31 (0) 6389 19585
Email: euinfo@major-equipment.com

Web: www.major-equipment.com



Find us on FACEBOOK
MAJOR MACHINERY



View our channel
MAJOREQUIPMENT

Disclaimer

While every effort has been made in the production of this manual to ensure that the information contained herein is full and correct, Major assumes no responsibility for errors or omissions.

Major reserves the right to modify the machinery and the technical data contained within the manual without prior notice.

Further to this, Major assumes no liability for any damages which may result from the use of the information contained within this manual.

Contents

Introduction

Thank you	1
Safety Aspects	1
Intended use	1

Product Identification

Machine Serial Numbers	1
Register Your Product and Warranty Online	1
Product Specifications	2
Tractor Requirements	2

Safety

Machine Safety Labels	3
Hazards associated with operating Grass Cutting Machinery	4
Operating Safely	5
Workstation	5
Regulations for use of the transmission	5
PTO Shaft Safety	6
Driving Safely on Public Roads	6

Operating the Machine

Key to Main Parts	7
Inspections before Use	8
Starting Regulations	9
Attaching the machine to the Tractor	9
Operating the Machine/Mowing	10
Roller and Castor wheels adjustment	11

Maintenance

Machine storage	12
PTO Shaft Maintenance	12
Replacement of wear parts	13
Blade Rotation	13
Wing shafts alignment	14
Lubrication schedule	14
Troubleshooting	14

MJ71 Spare Parts - Single Deck models

MJ71-190/240/190FM/240FM

MJ71-190	18
MJ71-240	22
MJ71-190FM	26
MJ71-240FM	28
MJ71 - Wheel Assembly (SW2-CW-01)	29

MJ71 Spare Parts - MJ71-540/400/340

MJ71-540 - Overview	30
MJ71-400 - Overview	30
MJ71-340 - Overview	30
MJ71-340/400/540 Body	31
MJ71-540 Wing	35
MJ71-400/340 Wing	38
MJ71-340 Wing	41
MJ71 Blades	44
Roller End - Parts List	45
MJ71 Scraper Bars	46
LF205H-205.872-1.92	47
LF205TH-205.874-1.92	48

EEC certificate of conformity for machines

(conforming to Directive 2006/42/EC)

Name of Manufacturer: Major Equipment Ltd
Address: Coolnaha, Ballyhaunis, Co. Mayo, Rep of Ireland

Tel. +353949630572
Fax +353949630788

declares in sole responsibility that the product:

Machine description and function: Rotary mower with vertical axes cutting heads which cuts grass so it can be subsequently picked up.

Model: Swift Rollermower (MJ71)

Type: _____

Serial number: _____

Technical file compiled by: Alex Kolchanov (c/o Major Equipment Ltd)

- **THE SUPPLY OF MACHINERY (SAFETY) REGULATIONS 2008.**
- **S.I. No. 299 of 2007**, Safety, Health and Welfare at Work (General Application) Regulations 2007 **(Ireland)**.
- **Health & Safety at Work, etc. Act 1974 (c.37) (UK)**.
- **EN ISO 14121-1: 2007** 'Safety of machinery. Principles for risk assessment'.
- **EN 745** - Agricultural Machinery - Rotary Mowers and Flail Mowers - Safety.
- **EN ISO 13857** - Safety of machinery: Safety distances to prevent hazard zones being reached by upper and lower limbs.

I hereby certify on behalf of Major Equipment Int. Ltd., that this machine when properly installed and operated correctly, complies with all the essential Health & Safety requirements of all legislation referred to above.

Signed:  _____

Date: 14/11/2018

Name: John Murphy

Position: Managing Director

Place: Coolnaha, Ballyhaunis, Co. Mayo, Rep of Ireland

Introduction

Thank you

We appreciate having you as a customer and wish you many years of safe and satisfied use of your machine.

Safety Aspects

This manual is an important part of your machine and should remain with the machine when you buy it. Reading your operator's manual will help you and others avoid personal injury or damage to the machine. Information given in this manual will provide the operator with the safest and most effective use of the machine. Only competent and skilled persons who have fully read and understood this operator's manual are allowed to operate this machine.

Sections in your operator's manual are placed in a specific order to help you understand all the safety messages so you can operate this machine safely. You can also use this manual to answer any specific operating or servicing questions.

Your manual contains special messages to bring attention to potential safety concerns, machine damage as well as helpful operating and servicing information. Please read all the information carefully to avoid injury and machine damage. Should any questions arise regarding the information given in this booklet, please contact your local MAJOR dealer or MAJOR.

The operator is solely responsible for the safe use and maintenance of the machine. The machine must only be operated by a competent and skilled person. Setting up and adjustment must only be carried by the operator. Do not let a third party person to adjust or modify the machine in any way.

Intended use

This machine is a grass cutting machine and designed for cutting grass. Moreover, it must only be used with a suitable tractor (see "Product Specifications" section of this booklet) and driven by an adequate drive-line of the tractor PTO. All other use is strictly prohibited. Major will not be held responsible for any loss or damage caused due to a misuse of the machine.

Product Identification

Machine Serial Numbers

If you need to contact MAJOR or your MAJOR dealer for information on servicing or spare parts, always provide the product model and serial numbers. Model and Serial number can be found on the Serial Plate located on the machine.

We suggest that you record your machine details below:

Model No: _____

Serial No: _____

Date of Purchase: _____

Dealer Name: _____

Dealer Telephone: _____



Register Your Product and Warranty Online

To register your product through the Internet, simply go to the Support section on www.major-equipment.com. Completing the information, either online or with the product warranty card, will ensure the customer that their product receives all post sales service and important product information.

This machine is warranted for 12 months with. No warranty is given where the machine is being used as a hire machine. Warranty is against faulty workmanship or parts.

Warranty covers parts only. All parts must be returned to the manufacturer. No warranty can be considered unless parts are returned. All replacement parts will be supplied on a chargeable basis until warranty has been accepted.

Product Specifications

Model	Overall Width	Working Width	Transport Width	Power (HP)	PTO rpm	Cutting Height (mm)	Rotors/Blades	Weight (kg)	Blade tip speed (m/s)	Mowing Rates (Acres/hr at 7mph)
MJ71-190	2.0m (6' 6")	1.9m (6' 3")	2.00m (6' 6")	25-70	540	10-150	3/6	465	75	5.3
MJ71-240	2.5m (8' 2")	2.40m (8')	2.50m (8' 2")	30-80	540	10-150	4/8	570	75	6.7
MJ71-340	3.48m	3.40m	1.90m	40-90	540	10-150	5/10	940	75	9.5
MJ71-400	4.16m	4.00m	1.90m	50-100	540	10-150	6/12	1100	75	11.4
MJ71-540	5.54m	5.40m	1.90m	50-100	540	10-150	8/16	1270	75	15.1

Tractor Requirements

It is the operator's responsibility to ensure that the tractor is suitable for the machine. Always consult your tractor's manual for any further information required.

Recommended Horse Power requirements for the particular models are provided in the "Product Specification" section of this booklet. Using excessive power can affect the quality of cut and/or may damage the machine.

Tractors which are not suitable for the operation can sustain damage due to the weight and power requirements of the machine. Always observe the weight of machine provided in the "Product Specification" section of this booklet, compare this with the guidelines from the tractor manual and ensure that the tractor can lift the machine safely.

The machine is designed to be attached by means of a 3 point linkage connection. The position of the machine can be adjusted by manual or hydraulic top link.

Winged models require one hydraulic spool with 1/2" female quick release connection for a single acting ram/rams.

Road light kit requires a 12V 7 pin socket.

The machine is propelled by using a standard 6 spline 1-3/8" PTO shaft (provided with the machine).

Safety

Machine Safety Labels

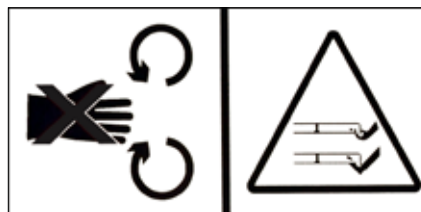
The machine safety labels shown in this section are placed in important areas on your machine to draw attention to potential safety hazards.

On your machine safety labels, the words DANGER, WARNING, and CAUTION are used with this safety alert symbol. DANGER identifies the most serious hazards.

The operator's manual also explains any potential safety hazards whenever necessary in special safety messages that are identified with the word, CAUTION, and the safety-alert symbol



To avoid injury, read the manual



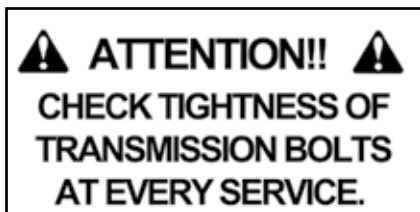
Rotating blade hazard



PTO entanglement hazard - keep clear of PTO drives.



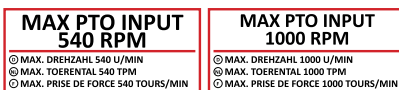
High oil pressure hazard



Check the tightness of the transmission



Grease points



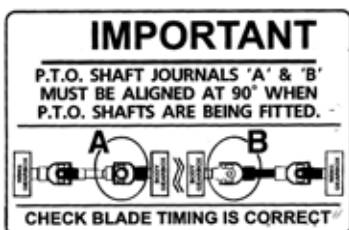
Maximum PTO input



Maximum speed



Moving parts



Shaft alignment

Hazards associated with operating Grass Cutting Machinery

Shear Hazard

Shear hazards are created when the edges of two objects move toward or next to each other closely enough to cut relatively soft material. This can include the parts of the machine under hydraulic control when operating from transport to mowing position. Note, the wing units are designed to float independently of the centre deck & are free to move within operating limits.

Crush Hazard

Bystanders can be injured when machine is lowered into mowing position. Winged machines have crush points around the hinge areas & between the wing & main body. Always use transport locking bars when not in use (winged models only).

Rotating Blade Hazard

All persons are at risk if they place their hands or feet under the machine when it is raised from the ground when the blades are in motion.

Pinch Hazard

Pinch points are created when two objects move together, with at least one of them moving in a circle. This hazard is common in power transmission devices such as Belt Drives, Gear Drives & Rollers. Ensure all guarding is present.

Wrap Hazard

Any exposed, rotating machine component is a potential wrap point. Injuries usually occur when loose clothing or long hair catch on and wrap around rotating parts such as PTO shafts or Drive shafts on the machine. Ensure all guarding is present.

Free-wheeling parts Hazard

The heavier a revolving part is, the longer it will continue to rotate after power is shut off. This characteristic is called 'free-wheeling.' Blades, and various other components, drive shafts etc., will continue to move after power is shut off - often for several minutes. Injuries occur when:

- Operators shut off equipment, and attempt to clean or adjust a machine before components have completely stopped moving.
- Shear bolt protection device in PTO shaft shears & the mowing parts are still spinning but the primary PTO shaft is stationary. Operator awareness is the key to safety around freewheeling parts. Never raise the machine while the blades are still rotating.

Thrown objects Hazard

Machines throw material as a natural part of doing their job. Foreign objects, such as stones, sticks and other debris, may be taken into this equipment and expelled at tremendous speed. These objects are contained by the sides of the machine and by the rear/front rollers / guards / chain guards / rubber skirts depending on model of your machine.

Ensure bystanders are clear from the machine & cannot be hit with debris expelled from the machine. Bystanders or animals in the path of thrown objects could be seriously injured. Never operate machine with decks raised from the ground as this makes the front/rear protection redundant.

Hydraulic Hazard (if applicable)

Hydraulic systems store considerable energy. Careless servicing, adjustment, or replacement of parts can result in serious injury. High pressure blasts of hydraulic oil can injure eyes or other body parts. The following precautions are crucial:

- Make certain the hydraulic pump is turned off.
- Lower attached equipment to the ground.
- Confirm that load pressure is off the system.

A pinhole leak in an hydraulic hose is a serious hazard. A leak may not be visible, and the only sign may be a few drops of fluid. Never inspect hydraulic hoses with your hands, because a fine jet of hydraulic fluid can pierce the skin.

Slips, Trips and Falls Hazard

Slips and falls often result from:

1. Slippery footing on the ground
2. Cluttered steps and work platforms.

The potential for slips and falls can be greatly reduced by using good judgement and practicing good housekeeping on and around equipment.

Noise Hazard

Please note that the machine is normally used outdoors and that the position of the operator is seated in the driving seat of the tractor. It is advisable to consult the prescriptions listed in tractor operator and maintenance manuals.

The acoustic pressure at a distance of 2.6m from the centre of the machine and at a height of 2.0m, with the implement operating in a no load condition can reach 90 dBA. In a loaded condition & a PTO rate of 540 rpm the value can reach 97dBA. Higher rate of PTO input will result in in higher noise levels. Always wear hearing protection.

Operating Safely

This MAJOR machine is designed to operate at a PTO rate which is stated in the Product Specifications part of this booklet. Ensure tractor PTO output is set at a correct RPM rate. This MAJOR machine must only be used for purposes outlined in the Intended Use section of this booklet. All other use is strictly prohibited.



Users should become thoroughly familiar with the contents of this manual before using, servicing and mounting the implement to the tractor and all other pertinent operations. Never wear jewellery, loose clothing such as ties, scarves, belts, unbuttoned jackets or dungarees with open zips which could become caught up in moving parts.



Always wear approved garments complying with accident prevention provisions such as non-slip shoes, ear muffs, goggles and gauntlets. Wear a jacket with reflecting stickers if the implement is used near public highways.



Consult your retailer, the Labour Health Service or your nearest equivalent authority for the information about the current safety provisions and specific regulations with in order to ensure personal safety.



ALWAYS DISENGAGE PTO, SWITCH OFF THE TRACTOR ENGINE AND ENGAGE THE PARKING BRAKE BEFORE MAKING ADJUSTMENT TO THE MACHINE.



NEVER PLACE LIMBS UNDER THE MACHINE WHILE ROTOR(S) ARE TURNING. ROTOR(S) CAN REMAIN TURNING FOR UP TO 1 MINUTE AFTER DISENGAGING PTO.

Workstation

The operator must remain seated while working the machine. If the machine is a winged unit and the wings need to be raised/lowered the operator must not leave the tractor. Always ensure the PTO has been turned off and the parking brake applied before leaving the tractor cab or carrying out maintenance.



NEVER OPERATE THE HYDRAULICS WITH THE TRACTOR SWITCHED OFF

Regulations for use of the transmission

The transmission to the gearboxes is protected throughout the machine by both PTO shafts and bolt down covers. All guarding should be kept efficient and in good condition. If the condition is poor, the guarding should be renewed before the implement is used.



UNLESS IT IS CORRECTLY PROTECTED THE TRANSMISSION COULD CAUSE DEATH SINCE IT CAN CATCH ON PARTS OF THE BODY OR CLOTHING

Ensure retaining chains are correctly anchored on all PTO shafts, preventing them from turning. Ensure drive line can turn easily within the shield. Keep spline grooves clean and greased so that PTO shaft can connect easily. Besides being described in this booklet, the method by which the PTO shaft is connected to the tractor must be checked out with the instructions in the tractor manufacturer's manual.

PTO Shaft Safety

Maximum PTO input is specified in the Product Specifications section of this booklet. Contact your nearest dealer or a specialised retail outlet if the PTO must be replaced with a longer one, since this must belong to the same power category and possess the same characteristics. An unsuitable PTO could easily break.

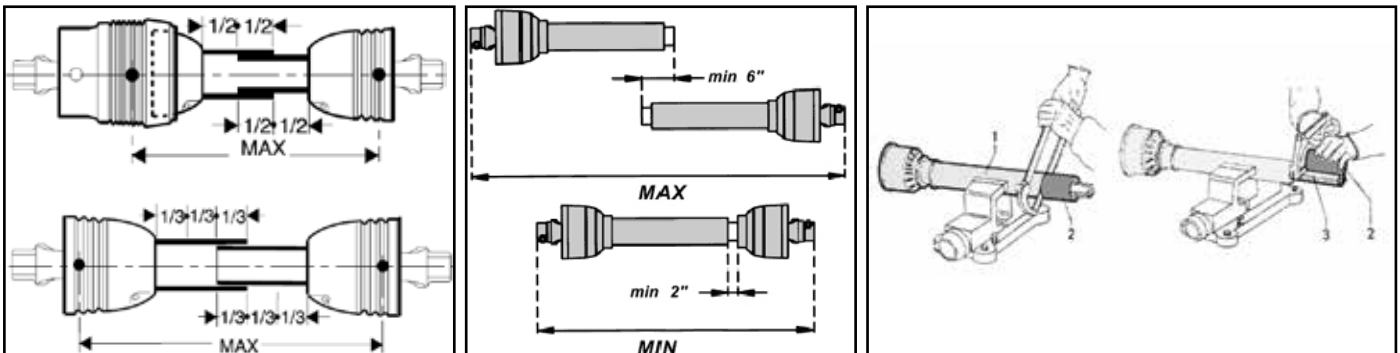
The tractor PTO shaft length may be altered to suit the individual tractor model. When the machine is in operation, the PTO shaft should have a minimum 1/3 engagement as shown in the diagrams. After the machine has been hitched to the tractor, it should be checked in various positions that the drive line is the correct length. If the PTO is too short and tends to slip out of place, it must be replaced with a longer one.

If the PTO shaft is too long, it should be shortened in the following way:

- Set the machine at a minimum distance from the tractor, then brake the tractor and switch off the engine.
- Separate the two halves of the PTO. Insert the female part into the tractor PTO and the male part into the machine PTO, checking that the position is correct by means of the fixing pins.
- Line up the two halves of the PTO together, keeping them parallel.
- Using a felt tip pen, match mark the place where the two halves must be shortened as shown.
- First cut shield "1" and use part "2" as a reference to cut the splined shaft.
- Proceed in the same way for the second half.
- Trim and chamfer the two cut ends of the PTO and clean off all swarf and shavings.
- Grease the two profiles and join the two halves of the PTO together.
- Mount the PTO shaft and check that its length is correct as before.



Do not use the shaft cone as a step



Driving Safely on Public Roads

Check the local Highway Code regulations before driving the tractor on public highways with an implement attached. Check the reflectors, hazard flashers and/or projecting load indicators are installed when required and efficient. These indicators must be installed correctly and easily seen by the drivers of other vehicles.

Bystanders must not be allowed to lean against or climb onto the machine during transport or while working. Do not allow bystanders to ride on the machine.



MAXIMUM TRANSPORT SPEED MUST NOT EXCEED 30 km/hr (18 MPH)

General safety instructions

Precautions to be taken while working with the machine:

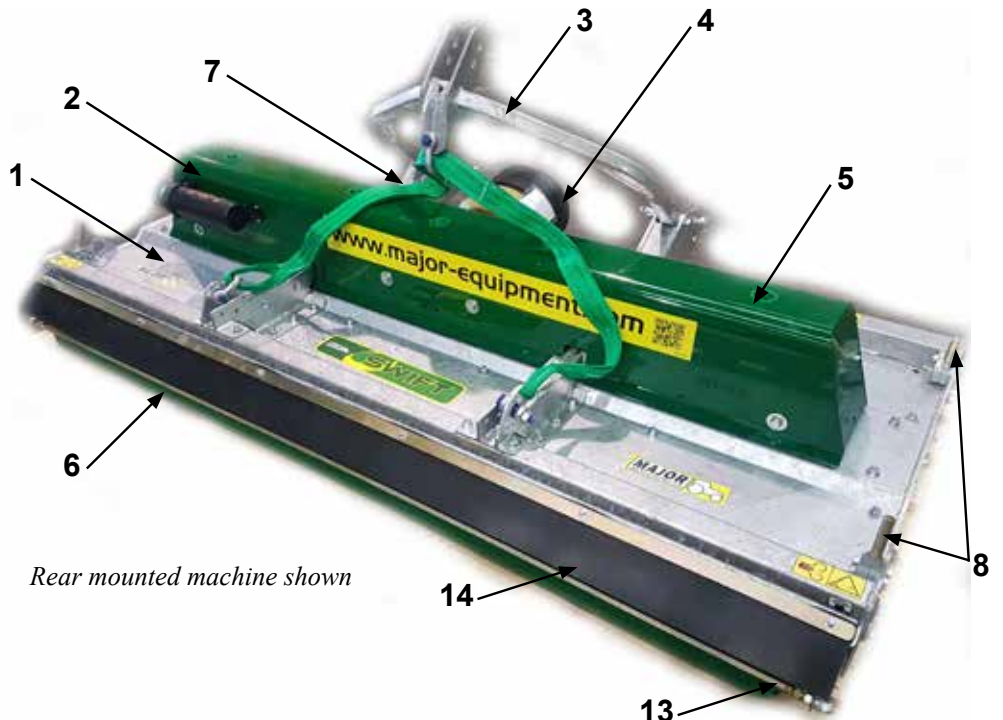
1. Do not operate the machine when you are tired or under the influence of alcohol or any other intoxicant;
2. Before starting mowing, make sure that the area is clear of people or animals.
3. Before starting adjusting the machine, it is mandatory to disconnect the PTO, to turn off the engine of the tractor, apply handbrake and wait for the turning parts to become still and placed on the ground.
4. It is mandatory to read all the safety requirements and the operator's manual of the machine.
5. If you are not sure how to use the machine, please contact the manufacturer or the dealer.

Operating the Machine

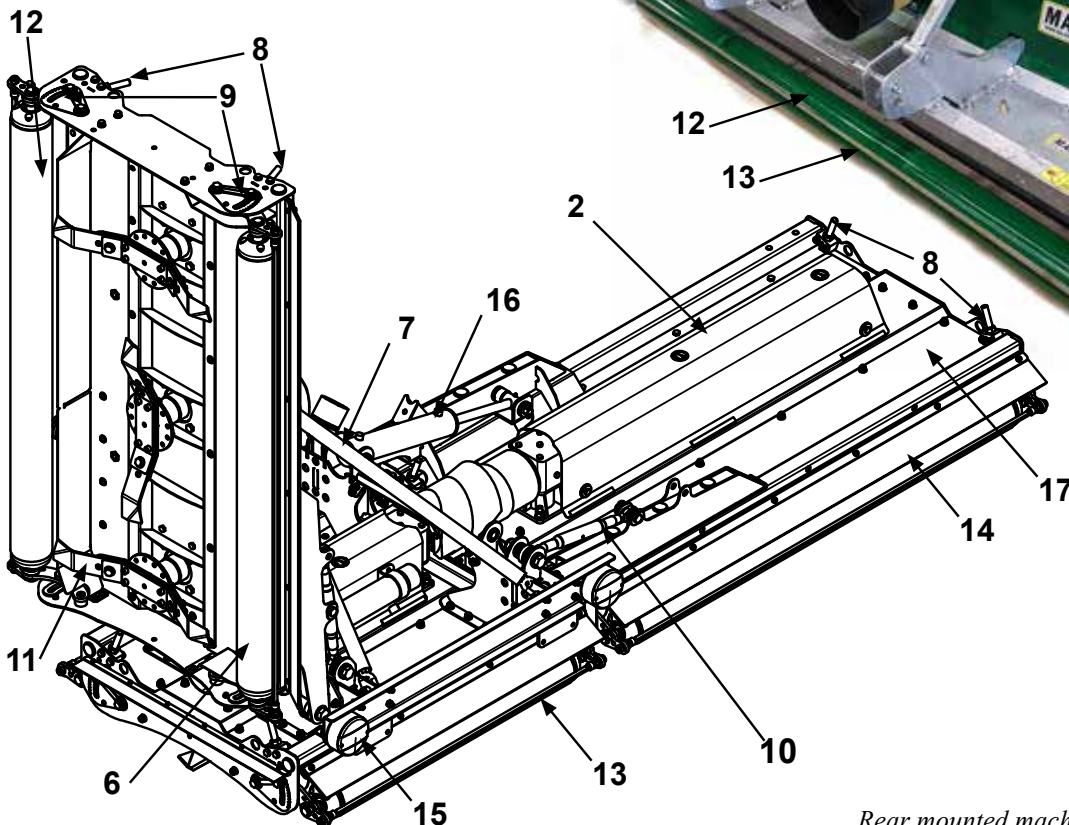
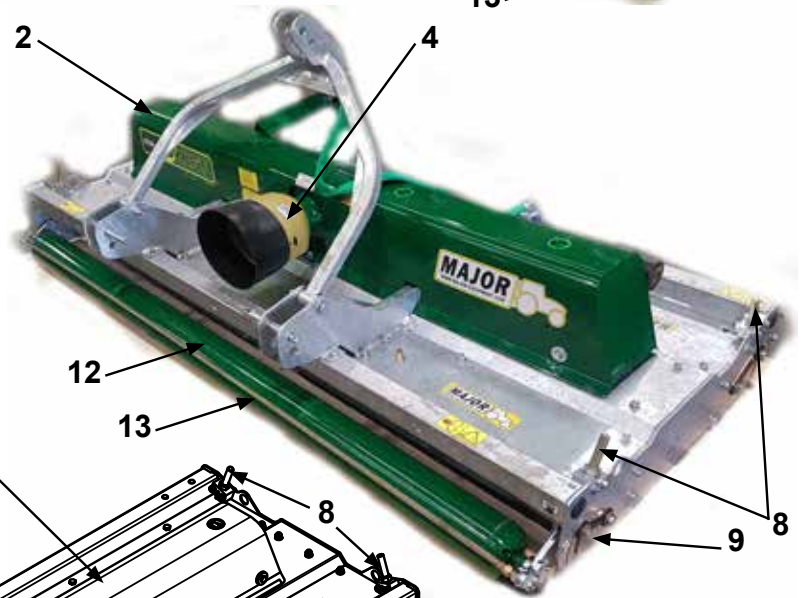
This machine is designed to be connected to a tractor by using a standard 3 point linkage connection. It can be installed either to the front or to the rear of the tractor, depending on the model of your machine.

Key to Main Parts

1	Body
2	Drivetrain cover
3	A-Frame
4	Gearbox PTO cover
5	PTO shaft
6	Rear roller
7	Strap
8	Roller height adjuster rod
9	Roller height indicator
10	Top Link
11	Blade
12	Front roller
13	Scraper bar
14	Rubber deflector
15	Lighting kit
16	Hydraulic Ram
17	Wing



Rear mounted machine shown



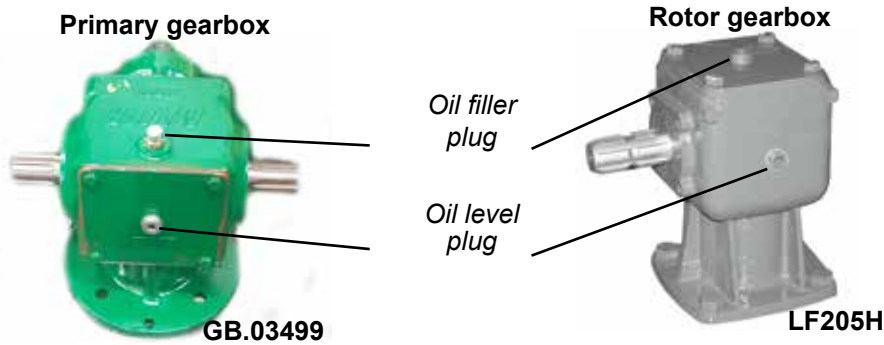
Rear mounted machine shown

Inspections before Use

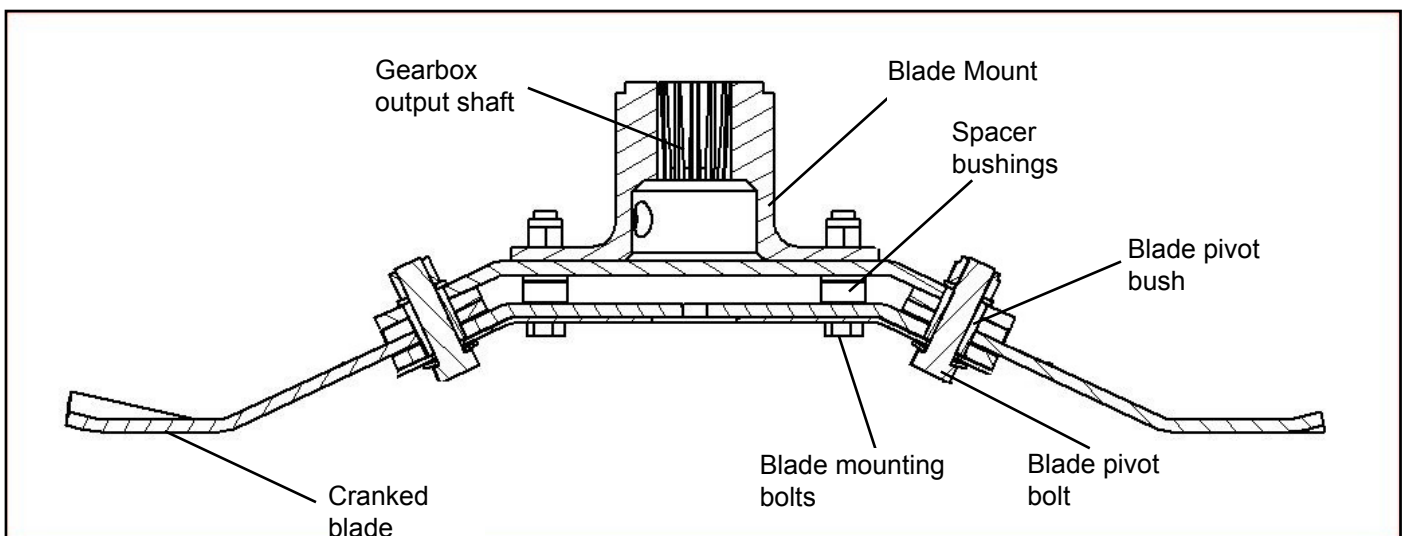


Always disengage PTO, Switch off tractor engine and engage the parking brake before making adjustments to the machine.

1. With the whole machine as level as possible, check the oil level in the Primary and Rotor Gearboxes and top up as required with recommended gear oil through the oil filler plug indicated. The correct level is at the oil level plug indicated.



2. Grease the PTO shaft universal joints, drive shaft bearing and carrying arm pivots.
3. Check the blades for wear and damage and replace worn blades with new ones if required.
4. If the blade assembly is removed check the blade mounting ensure the gearbox shaft nut is tight and retained in place by split pin.



5. Check tightness of all nuts, bolts and retaining screws after the first and second hours of work.
6. Ensure safety guards and flaps are in place at all times where fitted. If these become worn or missing, replace them immediately with new ones.
7. Due to the corrosive nature of grass when cut, wash down the machine when finished mowing, especially when the machine is being stored for a long period of time.

Starting Regulations



Always check that any imminently dangerous conditions have been eliminated before using the machine. Ensure all guarding is present & the operator is fully aware of the operations of the machine.



Always ensure the pins lock the PTO shaft yoke ends onto the spline shafts on both the tractor and the implement. An unlocked shaft could slip out of position, causing notable mechanical damage and serious injury to both operator and bystanders.

Attaching the machine to the Tractor



Always operate on level ground when attaching/detaching the machine. This will prevent dangerous movement. Never allow anyone to stand between the tractor and the machine.

Three Point Linkage Models

1. Adjust both lift arms of the tractor until they are level in relation to each other.
2. Hitch the lower linkage arms to the Machine and connect the top link and PTO shaft. Ensure that the locking pins are secure.
3. With the Machine lowered in its operating position, adjust the top link until the strap is slack, allowing the Machine to produce a uniform finish in varying ground conditions.
4. Connect the PTO shaft. Check for the length

Trailed Models

1. Adjust the tractor hitch pin so that the hitch pin is approximately 400 mm (16") from the end of the tractor PTO shaft.
2. Adjust the machine hitch eye to suit the tractor drawbar height paying particular attention to keep both height adjusting bolts as far as possible on the adjusting bracket. Careful adjustment of the hitch eye height at this stage is necessary in order to allow the machine to function safely and correctly.
3. Connect the machine to the tractor. Ensure no one is standing between the tractor and the Machine.
4. Before connecting the PTO shaft to the tractor, check it for length as shown earlier.

Transport Position



Before raising the machine wait until the transmission and the blades are completely still. During the transport of the machine it is recommended that the PTO shaft is disconnected.

1. Check machine is hitched to the tractor as described. Ensure the tractor parking brake is applied
2. Ensure moving parts become still then transform the machine into transport position by hydraulic control
3. During the transport and any time the machine shall be raised, the raising device shall be adjusted to assure that the machine is at least 250mm over the ground.

Transport Speed



Transport Speed of Trailed models should not exceed 25 km/h

Transport Position (Winged models only)

ALWAYS HAVE THE TRACTOR SWITCHED ON WHEN RAISING THE WINGS INTO TRANSPORT POSITION.

IMPORTANT: The transport locking bars, transport pin and axle ram stopper should always be slotted into place while transporting the machine. Doing this removes pressure from the hydraulic system. Failure to use the safety equipment can cause mechanical as well as physical damage.

Top Link Position



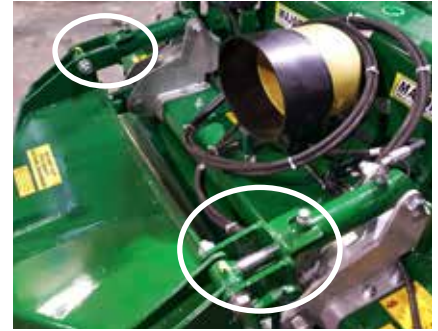
Transport Position

Axle Locks



Transport Position

Drawbar Locks



Transport Position



Mowing Position



Mowing Position



Mowing Position

Operating the Machine/Mowing



Never place limbs under the machine while rotors are turning. Rotors can remain turning for up to 1 minute after disengaging PTO.



While operating this machine the PTO input rate should not exceed the RPM stated in the Product Specifications section of this booklet. Always operate on level ground when connecting/disconnecting the implement. This will prevent dangerous movement.



Never allow anyone to stand between the tractor and the machine. Ensure the machine is attached correctly to the tractor as previously described. Always start up the tractor PTO at a low RPM. Build up to operating speed, select a suitable forward gear & proceed to cut grass.

1. Hitch the machine as outlined in the previous section. Ensure bystanders are clear from the machine & cannot be hit with debris expelled from the machine.
2. Locate the Parking Jack on its side under the PTO shaft on the stub provided (Trailed models only)
3. Ensure the PTO stand is flipped down. (Trailed models only)
4. Check PTO shaft is fully engaged on tractor PTO splines.
5. Raise the machine by hydraulic control. (Trailed models only)
6. Flip back axle and drawbar ram stoppers. (Trailed models only)
7. Lower the machine by hydraulic control to the ground or use tractor linkage controls.
8. After clearing the vicinity of bystanders, relocate the Wing Transport Locking Bars. Lower the wings by hydraulic control. Ensure hydraulic ram is fully closed. (Winged mowers only).
9. Start up the tractor PTO at a low RPM.
10. Build up to operating speed, select a suitable forward gear & proceed to cut grass.

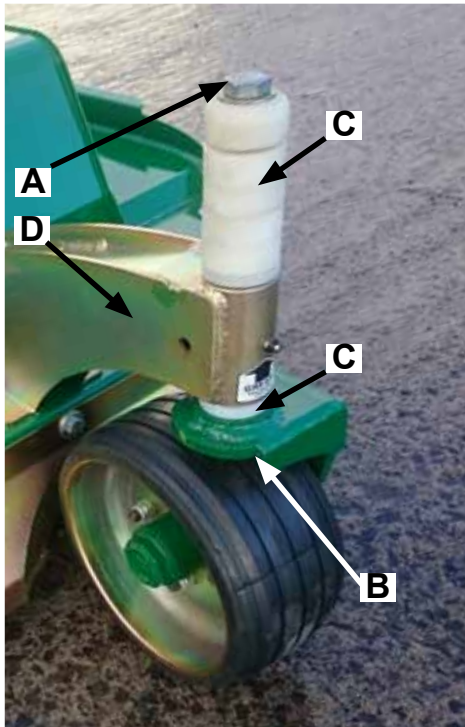
Roller and Castor wheels adjustment

In order to achieve desired cutting height, castor wheels and roller should be adjusted.

Castor wheels (optional)

To adjust the height of front wheels lift up the machine and:

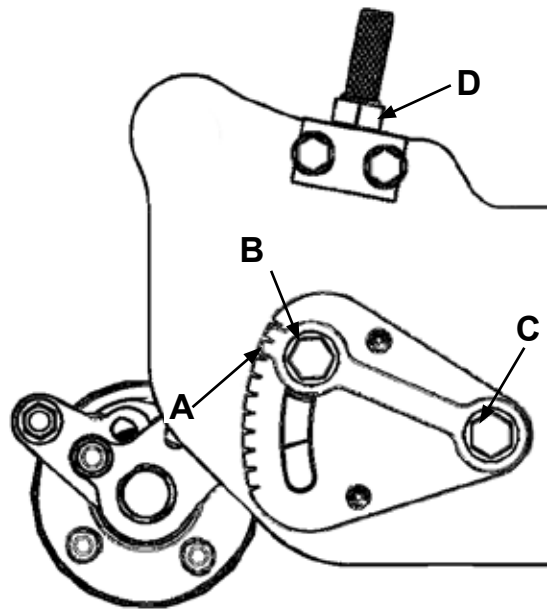
1. Unscrew and remove Bolt **A**;
2. Slide down the Castor Yoke **B** and remove it;
3. Depending on the desired cutting height place Spacers **C** above or below Castor Arm **D**.
4. When adjustment is complete, relocate Castor Yoke **B** and secure it with Bolt **A**.
5. Repeat this procedure for the other wheel.



Roller

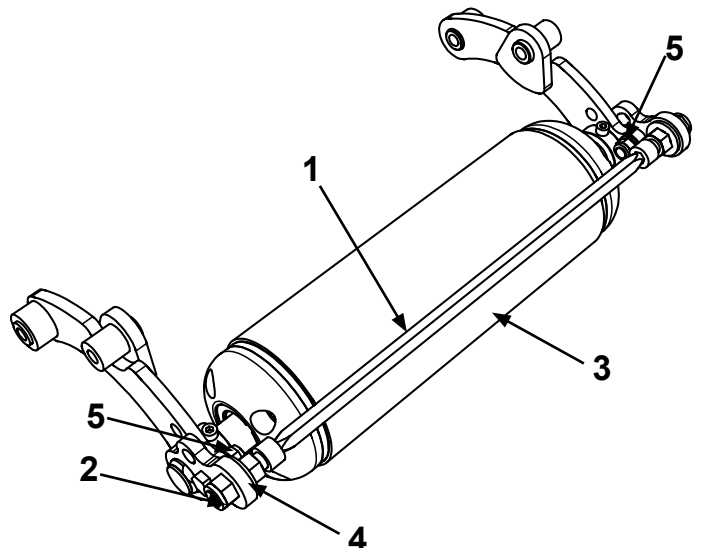
To adjust the height of the roller follow this procedure at both sides of the roller:

1. Loosen Bolts **B** and **C** (Note: You do not have to remove these bolts, half of the turn will suffice to allow movement);
2. Turn Nut **D** clockwise to increase the cut height or anti-clockwise to decrease the cut height;
3. Match the height of the roller on both sides of the machine by checking the position of Arrow **A**;
4. When adjustment is complete, re-tighten Bolts **B** and **C**.



Scraper bar

In order for a scraper bar to function properly, it should be kept tensioned. To tension the scraper bar (1) tighten up nuts (2) at both ends of the roller (3). Locate the scraper bar bracket (4) in a desired position by loosening/tightening bracket nut (5).



Maintenance

In order to keep your Major machine in a good working order it is necessary to conduct maintenance on a regular basis. Only competent and skilled persons who have fully read and understood this operator's manual are allowed to carry out maintenance on this machine. It is important to replace worn parts immediately with genuine Major spare parts. These parts are manufactured to the same specification as the machine and will provide the best result. Genuine Major spares can be obtained from MAJOR or your local MAJOR dealer.

All maintenance checks and operations must be carried on a firm level ground. The machine must always be disconnected from the tractor before any cleaning, lubricating and servicing operations can be carried out. If works must be carried out under the machine, ensure that the props, jacks, stands, hoists or cranes are capable of supporting the machine securely.

If emergency operations are required whilst the machine is connected to the tractor, switch off the engine of the tractor, remove the key from the ignition, engage the parking brake and disengage the PTO. An example of such emergency situation is the complete blockage of the machine in the field. To clear out the blockage follow the safety steps described above and clear out the blockage. Ensure there are no ropes, twines or wires wrapped around the rotors.

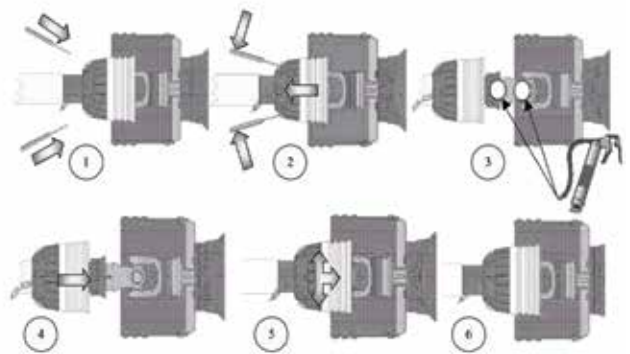
Machine storage

To prolong the life of your machine it is recommended to store it in a dry environment. Prior to parking the machine for storage, wash the machine thoroughly, especially underneath, and ensure that there is no grass or debris left on the machine. Lubricate all pivot points with EP2 type grease. Check for oil leaks and fix these if required. Any parts of the machine with damaged paint/galvanised surface must be painted.

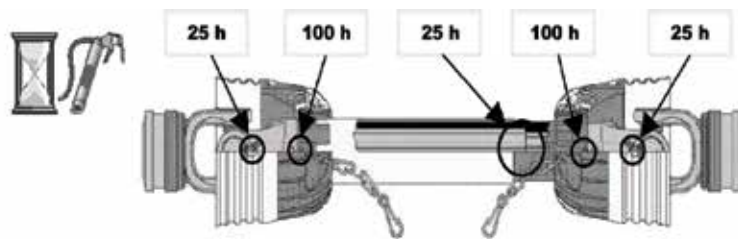
PTO Shaft Maintenance

Guard Removal and Yoke End Greasing

1. Prise back locking tabs
2. Pull back PTO Guard
3. Grease points as shown
4. Push Guard into position
5. Click into place
6. Tie check chain



PTO Greasing Intervals



Shearbolt Replacement (if applicable)

1. Slide yoke shield back.
2. Drive out sheared bolt with hammer and punch.
3. Align holes and install new shear bolt. (Use only genuine MAJOR replacement shear bolts)
4. Slide yoke shield securely in place



Always fit PTO shaft with the shearbolt/slip-clutch end connected to the machine as directed on the PTO guarding.



Maintenance of other components

- All nuts and bolts in the transmission including Rubber couplings, Star Drives, PTO Shafts and Gearboxes should be checked for tightness after mowing at the following intervals:
 - 1st 40 hours
 - 1st 100 hours
 - 1st 250 hours
 - And every 250 hours thereafter.
- Check blades on a regular basis for wear. Replace any damaged or worn parts immediately.

Rollers

Check the condition of the roller ends at the end of every season. Roller end shaft must be able to rotate freely and without excessive play. If necessary, remove the roller end and adjust the tightness of the bearings.

Replacement of wear parts

Blades, blade backs, blade bushing, blade bolts and nuts must be checked on a regular basis for wear and deflection. MAJOR recommends to visually check the blade assemblies every 40 hours of operation. This interval may change depending on the operational conditions.

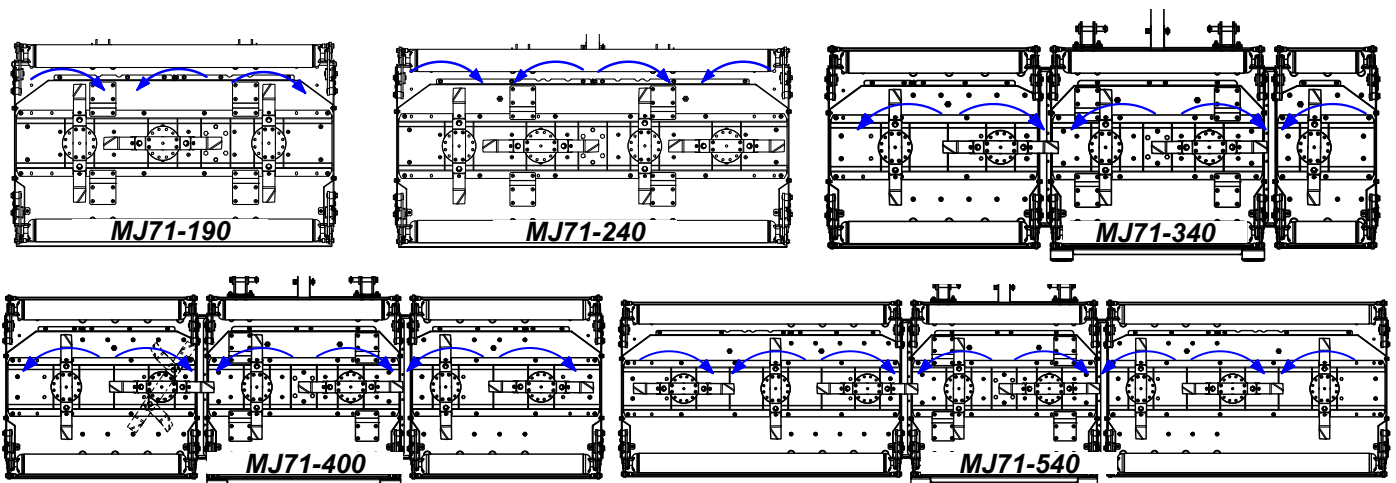
Replace any damaged or worn parts immediately, failure to do so can result in blade breakages and can cause damage to the equipment or injuries to the operator and others nearby.

Blunt blades must be sharpened or replaced, failure to do so will result in a poor quality cut and excessive use of power from your tractor.

Blade Rotation



Ensure blade rotation and timing (90 degrees) is correct after servicing transmission. See diagrams below.

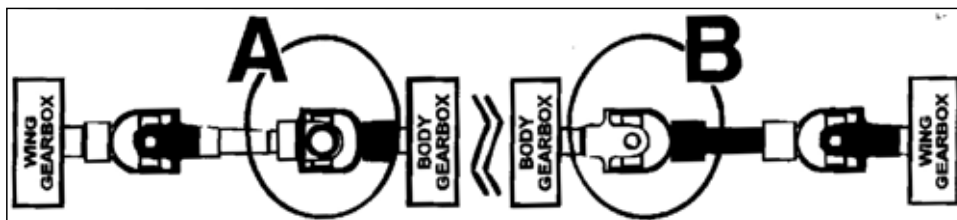


*Blade rotation viewed from underside
Rear mounted machines shown*

Wing shafts alignment



ENSURE THAT AFTER SERVICING THE TRANSMISSION, THE WING PTO SHAFT YOKES ARE CORRECTLY ALIGNED AS SHOWN IN THE DIAGRAM BELOW – WINGED MODELS ONLY. IF THE SHAFT JOURNALS ARE FITTED INCORRECTLY THE DAMAGE WILL ONLY OCCUR WHEN THE WINGS ARE RAISED INTO TRANSPORT POSITION.



Lubrication schedule

Use EP2 type grease or equivalent.

Replace oil in gearboxes after first 100 hours

Use oil which conforms to 80W/90 standards.

	Initially	8 hours	40 hours	80 hours	400 hours
All PTO Shaft Yoke Ends	●	●			
PTO tubes	●			●	
Roller height adjuster (4x2) - single deck models (12x2) - winged models		●			
Roller		●			
Wing eye pivot (0/2/4)			●		
Hydraulic Ram (0/1/2)			●		
Castor wheel pivot				●	
Castor wheel axle				●	
Check oil levels in the gearboxes				●	
Replace oil in gearboxes					●

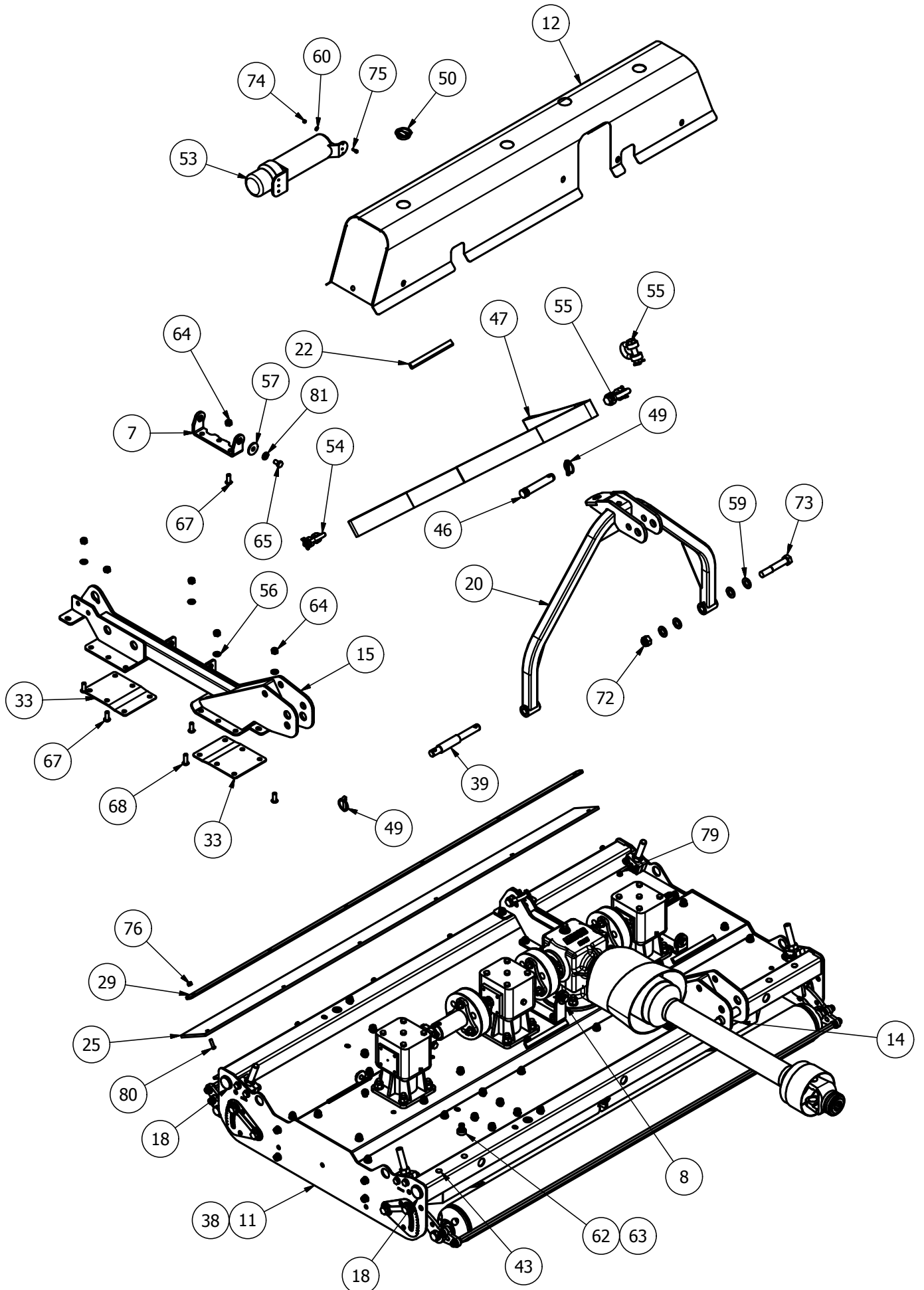
Troubleshooting

Fault	Cause	Remedy
Leaves a streak of uncut or partially cut grass	Blades dull or bent	Replace blades
	Carrier RPM too low	Use correct PTO speed
	Field conditions are so wet that the wheels are pushing grass into mud	Too wet to mow. Stop operation and wait until it is drier
	Ground speed too fast	Reduce ground speed by shifting to a lower gear
	Grass is down from previous weather conditions	Mow in only one direction
	Possible build-up materials under machine	Clean the machine
	Blades mounted incorrectly (cutting edge against direction rotation)	Change blades so that cutting edge is facing correct rotation

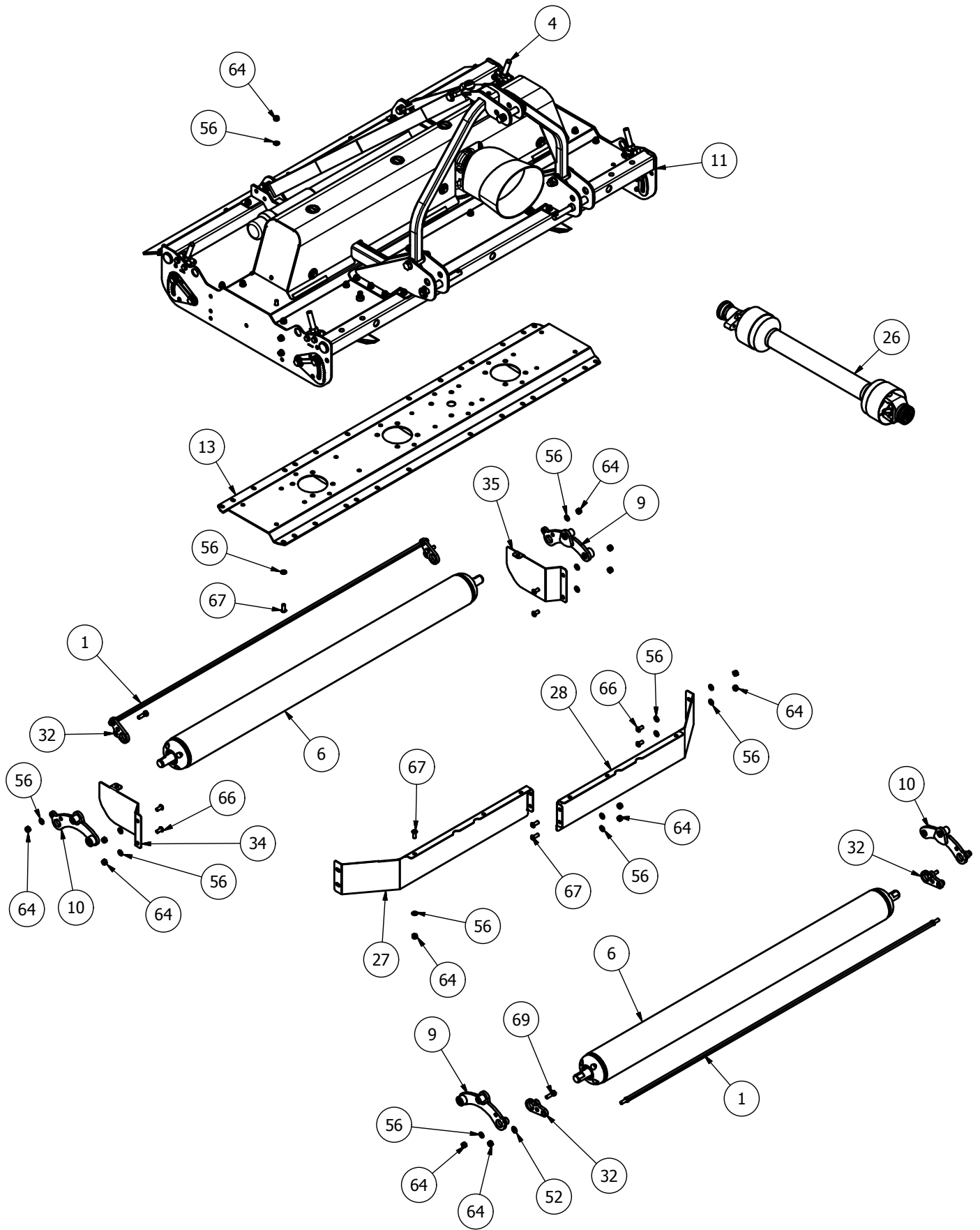
Material discharges from machine unevenly; bunches of material along with swath	Material too high and too much material	Reduce ground speed but maintain recommended rpm at tractor PTO or make two passes over material. Raise machine for the first pass and lower to desired height for the second and cut a 90 degree angle to first pass
	Grass wet	Allow grass to dry before mowing. Slow ground speed of tractor but keep engine running at full PTO rpm. Cutting lower will help
Gearbox overheating	Low on lubricant	Fill to proper level
	Improper type lubricant	Replace with proper lubricant
	Excessive grass/debris build-up around gearbox. PTO running too fast.	Remove grass, etc from machine. Lower the RPM rate
Blade is scalping ground	Machine too low	Raise machine - reset wheels
	Field is ridged	Cut field at a different angle
	Field is too wet	Stop and wait until it is dried
Blades wear too fast	Cutting in sandy conditions	Increase cutting height
	Cutting in rocky conditions	Increase cutting height
	Blades hitting the ground	Increase cutting height
Machine seems to require excessive power	Advancing into grass too rapidly	Reduce forward travel speed
	Hitting ground	Raise machine and reset wheels
	Worn or dull blades	Sharpen or replace blades
Excessive vibration	Check gearbox bolts	Tighten if loose
	Check for loose nuts on blades	Tighten if loose
	Blade broken	Replace blades, in set
	New blade or bolts matched with worn blade or bolts	Replace blades or bolts in sets
	Drivelines not phased correctly. Implement and tractor yokes must be in line	Phase the driveline. Replace if necessary
Noisy machine	Low oil in gearbox	Check level and add oil
	Loose Parts	Check all bolts are fully tightened
	Wrong PTO rpm rate	Check PTO rate & adjust as necessary
	Rotors bent/broken	Replace bent or missing blades
	Bent PTO shaft	Check PTO shaft aligned correctly
	Bent gearbox shaft	Check output shaft on gearboxes are not bent
		Check driveline between gearboxes is aligned
Gearbox leaking	Damaged oil seal	Replace seal
	Bent shaft	Replace oil seal and shaft
	Shaft rough in oil seal area	Replace or repair shaft
	Oil seal installed incorrectly	Replace seal
	Oil seal not sealing in the housing	Replace seal or use a sealant on outside diameter of seal
	Oil level too high	Drain oil to proper level
	Hole in gearbox	Replace the gearbox
	Gasket damaged	Replace gasket
	Bolts loose	Tighten bolts

MJ71 Spare Parts - Single Deck models
MJ71-190, MJ71-240
MJ71-240FM

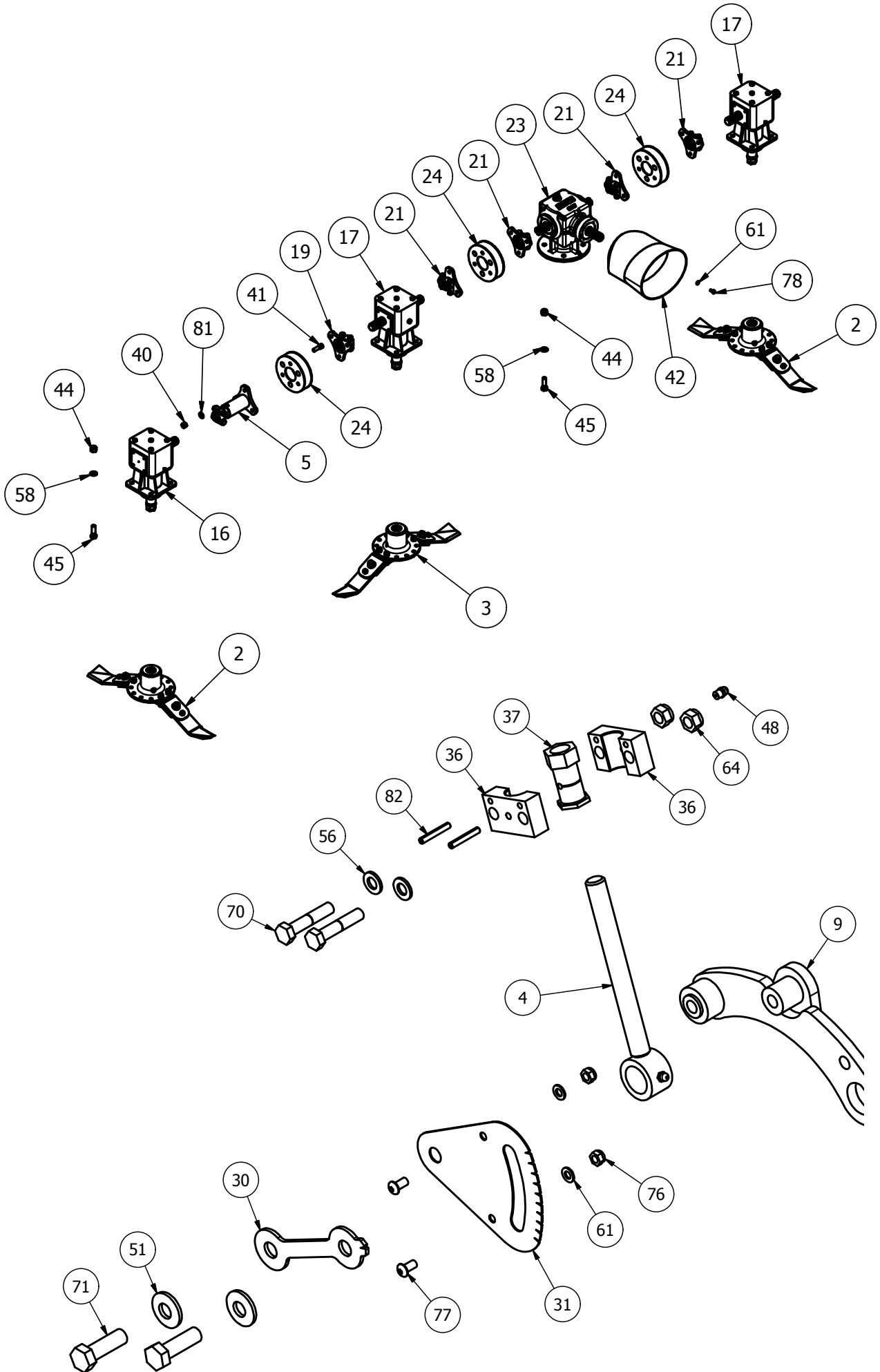
MJ71-190 - General Assembly



MJ71-190 - Underbody Assembly



MJ71-190 - Drivetrain and Roller Height Adjuster Assembly



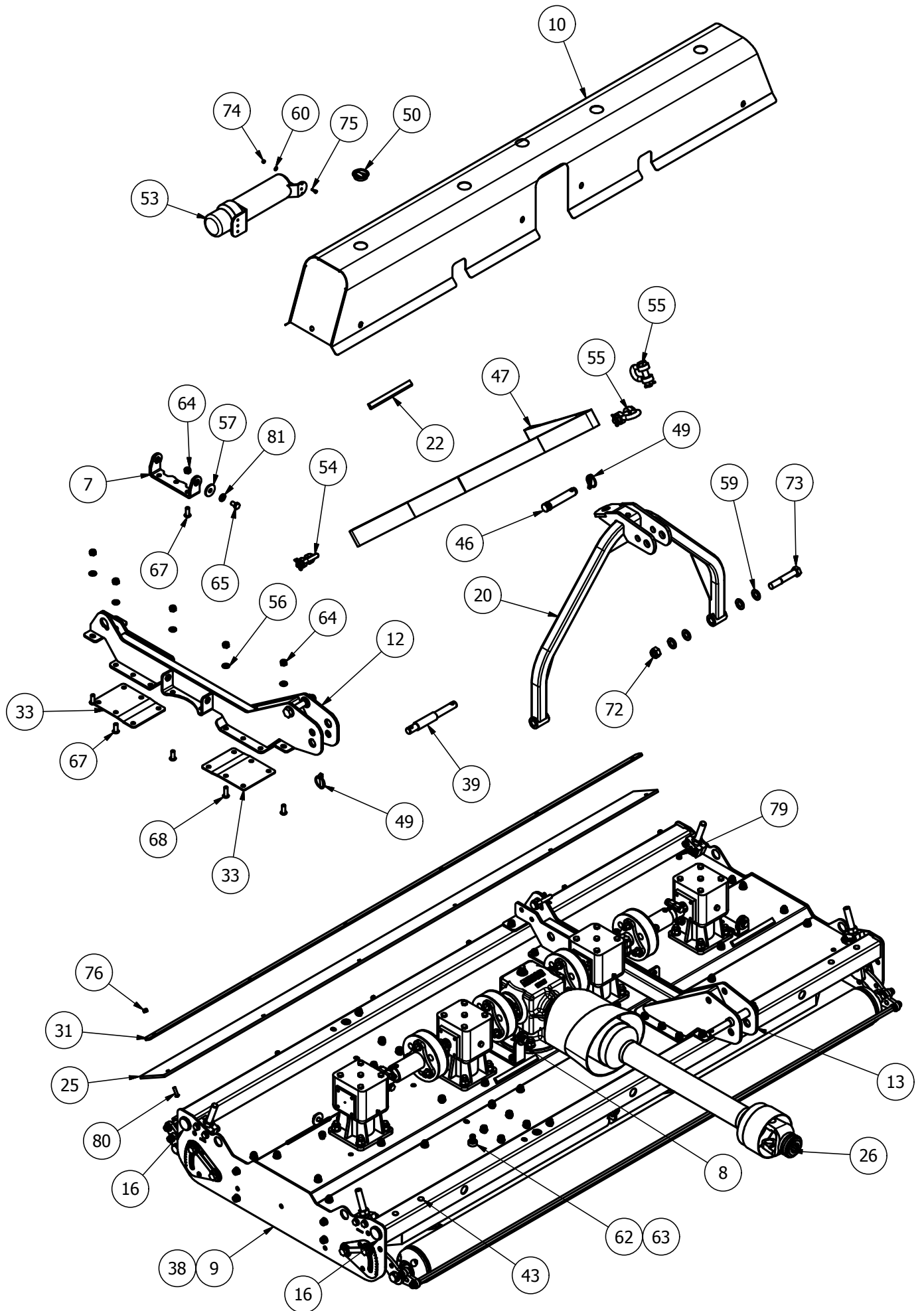
MJ71-190 - Parts List

Item	Part No.	Description	Qty
1	SW2-190-BSCRPR-01	MJ71-190 SWIFT SCRAPER	2
2*	725-BLD4-FL	725 FIXED BLADE (Anti_Clk)	2
3*	725-BLD4-FR	725 FIXED BLADE (Clk)	1
4	8400RM-HG65	M20 THREADED ADJUSTER	4
5	DRV-SWT240	SWIFT240/190 DRIVE	1
6	GM63-ROL	6300 ROLLER	2
7	8400RM-CV14	GUARD BASE MOUNT	2
8	8400RM-CV20	GUARD BASE MOUNT	1
9	8400RM-RPV01	ROLLER PIVOT	2
10	8400RM-RPV10	ROLLER PIVOT	2
11	SW2-190-BD01	190 BODY	1
12	SW2-190-CVR	SWIFT 190 GEARBOX COVER	1
13	SW2-190-GBR01	UNDERSIDE TROUGH	1
14	SW2-240-LK01	LINKAGE MOUNT	1
15	SW2-240-LK01H	LINKAGE MOUNT	1
16	LF205H	6 SPLINE 'L' BOX RATIO 1.92	1
17	LF205TH	6 SPLINE 'T' BOX RATIO 1.92	2
18	5582	DIA 38.3-42mm INSERT	4
19	60CSD	60mm STAR DRIVE	1
20	909-AF-01	909 A-FRAME	1
21	CM25-DRV	6 SPLINE STAR DRIVE	4
22	LS002	ANTI VIBRATION RUBBER	6
23	GB.03499	6 SPLINE 'T' BOX 1:1.9 3-way	1
24	MJRC-113	113 PCD RUBBER COUPLING	3
25	SW2-190-DF01	RUBBER FLAP	1
26	V600810ENC12RB2	V60 SHEARBOLT / OR	1
27	6300RM-AF02	AERO-FOIL (6300)	1
28	6300RM-AF02H	AERO-FOIL (6300)	1
29	6300RM3-CV23	RUBBER CLAMP	1
30	8400RM-HG03	HEIGHT INDICATOR	4
31	8400RM-HG04	HEIGHT GUIDE	4
32	SCRPR-SQ12-01	SCRAPER MOUNT	4
33	SW-240-LM09	SUPPORT PLATE	4
34	SW2-240-DF02	REAR DEFLECTOR	1
35	SW2-240-DF02H	REAR DEFLECTOR	1
36	8400RM-HG76	HEIGHT PIVOT BLOCK	8
37	8400RM-HG77	M20 HEX ADJUSTER	4
38	111044	DIA 26-30mm INSERT	8
39	11874	CAT 1/2 LINK PIN	2
40	12HEX109	1/2F HEX 10.9	18
41	12x112FSKS	1/2"x1 1/2" FINE SKT HEAD 12.9	18
42	190.000.545	PTO GUARD (EXTENDED)	1
43	465684	DIA 14mm INSERT	8
44	5/8F	5/8" FINE NYLOC NUT	16
45	58x2FBZP	5/8"x2" FINE BOLT	16
46	81	CAT 2 PIN DIA 25.4x110mm	1
47	8400STR	8400RM MKII STRAP (2130mm)	1
48	851	GREASE NIPPLE M8x1.25 STR	8
49	AN099/10	LINCH PIN DIA 9.5	3
50	CP176-181MG1	45mm INSERT	4
51	CW39174	DISC SPRING (YELLOW)	8
52	D281421	DISC SPRING 28x14.2x1.0	4

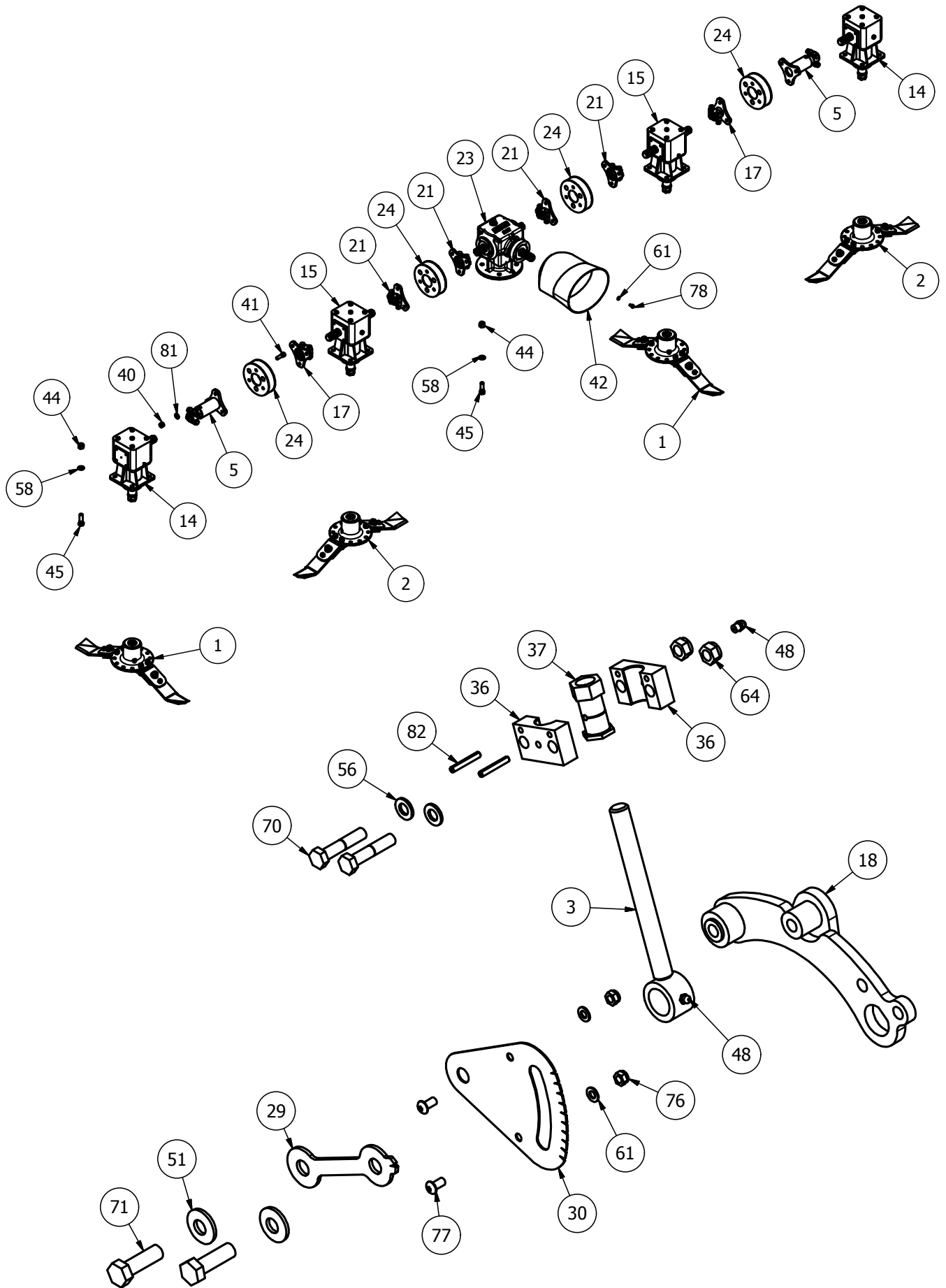
53	DH-10404	DOCUMENT HOLDER 350x85	1
54	DSR-1-2	1/2" RATED 'D' SHACKLE	2
55	DSR-5-8	5/8" RATED 'D' SHACKLE	2
56	FWM12	M12 FLAT WASHER	120
57	FWM12XL	M12 FLAT WASHER (X-LARGE)	8
58	FWM16	M16 FLAT WASHER	16
59	FWM20	M20 FLAT WASHER	8
60	FWM5	M5 FLAT WASHER	4
61	FWM8	M8 FLAT WASHER	22
62	G1106	BRASS TAP CONNECTOR	2
63	I-257	3/4x1/2 REDUCER BUSH	2
64	M12	M12 NYLOC NUT	98
65	M12x20SZP	M12x20 SET BOLT	8
66	M12x25SKBH	M12x25 SKT BTN HEAD 10.9	8
67	M12x30SKBH	M12x30 SKT BTN HEAD 10.9	64
68	M12x35SKBH	M12x35 SKT BTN HEAD 10.9	10
69	M12x40BZP	M12x40 BOLT	4
70	M12x60BZP	M12x60 BOLT	8
71	M16x50SZP	M16x50 SET BOLT	8
72	M20	M20 NYLOC NUT	2
73	M20x120BZP	M20x120 BOLT	2
74	M5	M5 NYLOC NUT	4
75	M5x16SZP	M5x16 SET BOLT	4
76	M8	M8 NYLOC NUT	16
77	M8x16SKBH	M8x16 SKT BTN HEAD 10.9	8
78	M8x16SZP	M8x16 SET BOLT	4
79	M8x20SKBH	M8x20 SKT BUTTON HEAD 10.9	2
80	M8x30SKBH	M8x30 SKT BUTTON HEAD 10.9	6
81	NL12SP	M12 SP NORDLOCK	26
82	S1215	ROLL PIN DIA 6x40	8

* - further breakdown provided

MJ71-240 - General Assembly



MJ71-240 - Drivetrain and Roller Height Asjuter Assembly

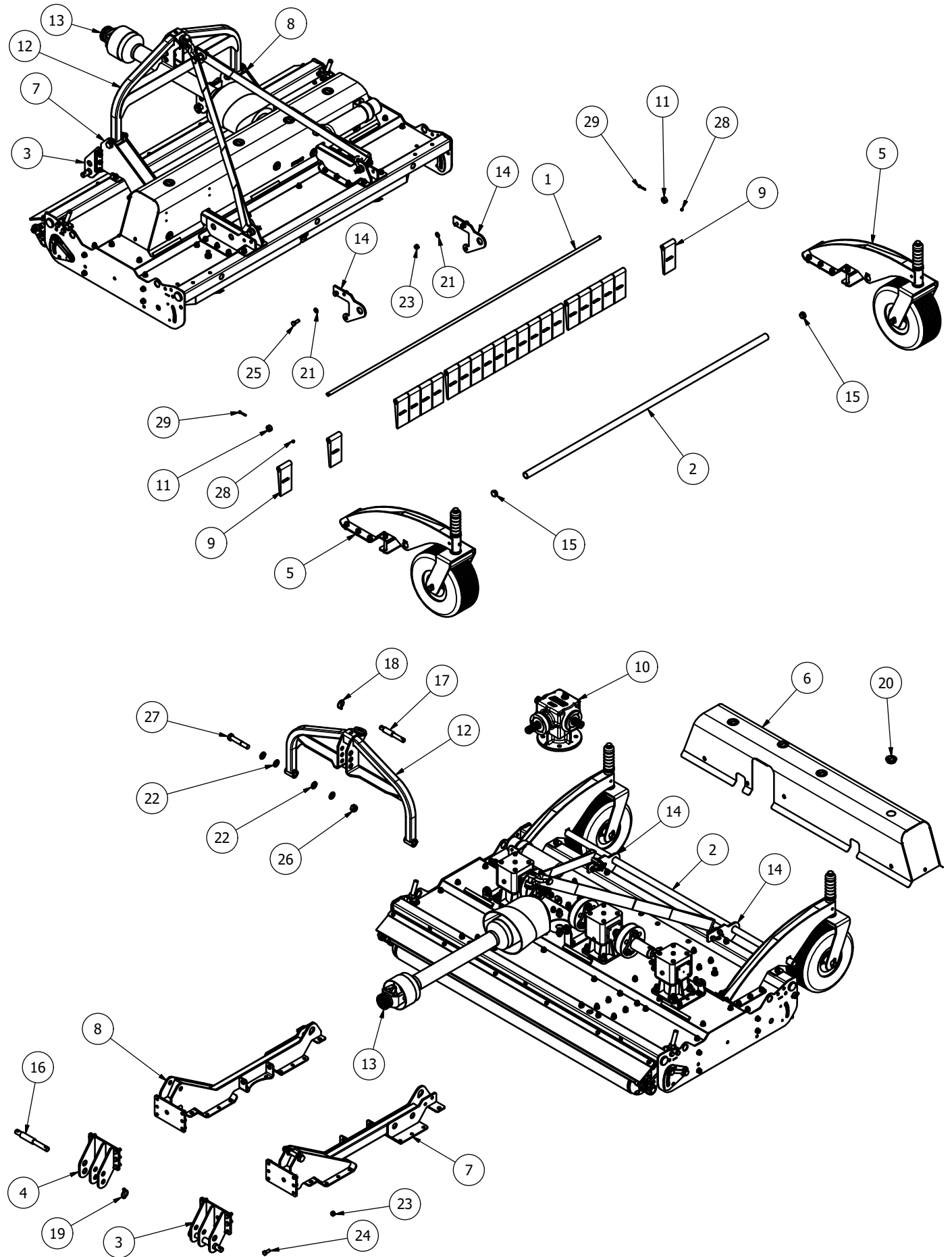


MJ71-240 - Parts List

Item	Part No.	Description	Qty
1*	725-BLD4-FL	725 FIXED BLADE (Anti_Clk)	2
2*	725-BLD4-FR	725 FIXED BLADE (Clk)	2
3	8400RM-HG65	M20 THREADED ADJUSTER	4
4	SW2-240-BSCRPR-01	MJ71-240 SWIFT SCRAPER	2
5	DRV-SWT240	SWIFT240/190 DRIVE	2
6	GM84-ROL	8400 ROLLER	2
7	8400RM-CV14	GUARD BASE MOUNT	2
8	8400RM-CV20	GUARD BASE MOUNT	2
9	SW2-240-BD01	240 BODY	1
10	SW2-240-CVR	SWIFT 240 GEARBOX COVER	1
11	SW2-240-GBR01	UNDERSIDE TROUGH	1
12	SW2-240-LK01	LINKAGE MOUNT	1
13	SW2-240-LK01H	LINKAGE MOUNT	1
14	LF205H	6 SPLINE 'L' BOX RATIO 1.92	2
15	LF205TH	6 SPLINE 'T' BOX RATIO 1.92	2
16	5582	DIA 38.3-42mm INSERT	4
17	60CSD	60mm STAR DRIVE	2
18	8400RM-RPV01	ROLLER PIVOT	2
19	8400RM-RPV10	ROLLER PIVOT	2
20	909-AF-01	909 A-FRAME	1
21	CM25-DRV	6 SPLINE STAR DRIVE	4
22	LS002	ANTI VIBRATION RUBBER	8
23	GB.03499	6 SPLINE 'T' BOX 1:1.9 3-way	1
24	MJRC-113	113 PCD RUBBER COUPLING	4
25	SW2-240-DF01	RUBBER FLAP	1
26	V600810ENC12RB2	V60 SHEARBOLT / OR	1
27	8400RM-AF03	AERO-FOIL (8400)	1
28	8400RM-AF03H	AERO-FOIL (8400)	1
29	8400RM-HG03	HEIGHT INDICATOR	4
30	8400RM-HG04	HEIGHT GUIDE	4
31	8400RM3-CV23	RUBBER CLAMP	1
32	SCRPR-SQ12-01	SCRAPER MOUNT	4
33	SW-240-LM09	SUPPORT PLATE	4
34	SW2-240-DF02	REAR DEFLECTOR	1
35	SW2-240-DF02H	REAR DEFLECTOR	1
36	8400RM-HG76	HEIGHT PIVOT BLOCK	8
37	8400RM-HG77	M20 HEX ADJUSTER	4
38	111044	DIA 26-30mm INSERT	8
39	11874	CAT 1/2 LINK PIN	2
40	12HEX109	1/2F HEX 10.9	24
41	12x112FSKS	1/2"x1 1/2" FINE SKT HEAD 12.9	24
42	190.000.545	PTO GUARD (EXT OVAL)	1
43	465684	DIA 14mm INSERT	8
44	5/8F	5/8" FINE NYLOC NUT	20
45	58x2FBZP	5/8"x2" FINE BOLT	20
46	81	CAT 2 PIN DIA 25.4x110mm	1
47	8400STR	8400RM MKII STRAP (2130mm)	1
48	851	GREASE NIPPLE M8x1.25 STR	8
49	AN099/10	LINCH PIN DIA 9.5	3
50	CP176-181MG1	45mm INSERT	5
51	CW39174	DISC SPRING 39x17x4	8
52	D281421	DISC SPRING 28x14.2x1.0	4
53	DH-10404	DOCUMENT HOLDER 350x85	1
54	DSR-1-2	1/2" RATED 'D' SHACKLE	2
55	DSR-5-8	5/8" RATED 'D' SHACKLE	2
56	FWM12	M12 FLAT WASHER	124
57	FWM12XL	M12 FLAT WASHER (X-LARGE)	8
58	FWM16	M16 FLAT WASHER	20
59	FWM20	M20 FLAT WASHER	8
60	FWM5	M5 FLAT WASHER	4
61	FWM8	M8 FLAT WASHER	22
62	G1106	BRASS TAP CONNECTOR	2
63	I-257	3/4x1/2 REDUCER BUSH	2
64	M12	M12 NYLOC NUT	102
65	M12x20SZP	M12x20 SET BOLT	8
66	M12x25SKBH	M12x25 SKT BUTTON HEAD 10.9	8
67	M12x30SKBH	M12x30 SKT BUTTON HEAD 10.9	68
68	M12x35SKBH	M12x35 SKT BUTTON HEAD 10.9	10
69	M12x40BZP	M12x40 BOLT	4
70	M12x60BZP	M12x60 BOLT	8
71	M16x50SZP	M16x50 SET BOLT	8
72	M20	M20 NYLOC NUT	2
73	M20x120BZP	M20x120 BOLT	2
74	M5	M5 NYLOC NUT	4
75	M5x16SZP	M5x16 SET BOLT	4
76	M8	M8 NYLOC NUT	16
77	M8x16SKBH	M8x16 SKT BUTTON HEAD 10.9	8
78	M8x16SZP	M8x16 SET BOLT	4
79	M8x20SKBH	M8x20 SKT BUTTON HEAD 10.9	2
80	M8x30SKBH	M8x30 SKT BUTTON HEAD 10.9	6
81	NL12SP	M12 SP NORDLOCK	32
82	S1215	ROLL PIN DIA 6x40	8

* - further breakdown provided

MJ71-190FM - General Assembly

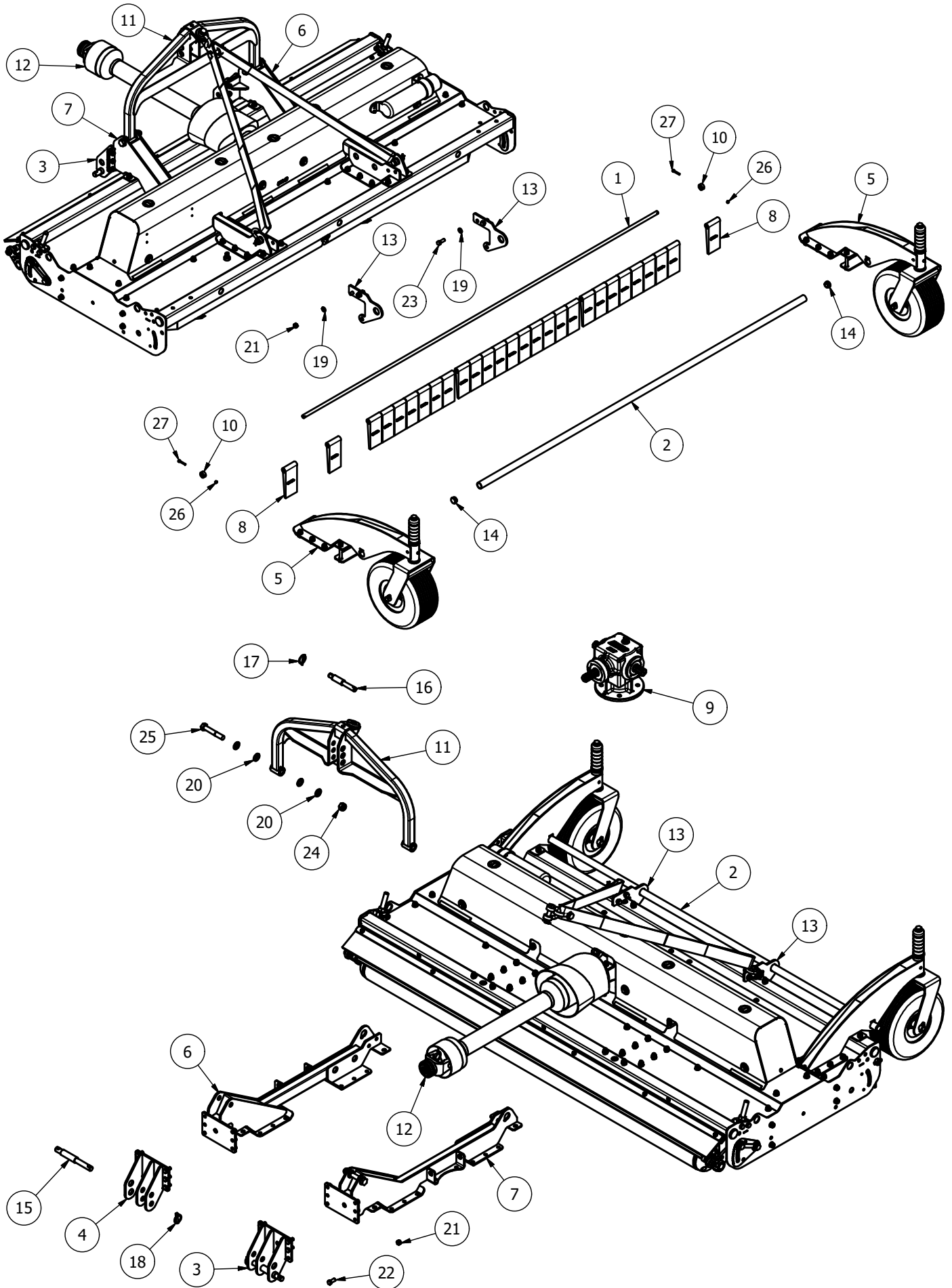


MJ71-190FM - Parts List

Item	Part No.	Description	Qty
1	MJ70-190-FMGF02	FLAP PIVOT SHAFT	1
2	MJ70-190-FMGF15	GUARD TUBE	1
3	SW-190-FLPM01	LINK PIN MOUNT	1
4	SW-190-FLPM01H	LINK PIN MOUNT	1
5*	SW2-CW-01	SWIFT CASTOR (FRONT)	2
6	SW2-190-CVRF	SWIFT 190 COVER (FRONT)	1
7	SW2-190FM-LK01	FRONT MOUNT LINKAGE	1
8	SW2-190FM-LK01H	LINKAGE MOUNT	1
9	BAN80X180NI	FLAP 80x180 WEIGHTED	22
10	M50V1-00-03512	6 SPLINE 'T' BOX 1:1	1
11	S96	DIA 5/8"x1 1/8"x1/2" COLLAR	2
12	SW-FM-C12	SWIFT A FRAME CAT 1-2	1
13	WS602256	2400 SHEARBOLT / OR	1
14	SW2-240-FMGF01	FLAP SUPPORT (FRONT)	2
15	111044	DIA 26-30mm INSERT	10
16	11874	CAT 1/2 LINK PIN	2
17	3234	CAT 1/2 TOP LINK PIN	1
18	37	LINCH PIN DIA 6	1
19	AN099/10	LINCH PIN DIA 9.5	2
20	CP176-181MG1	45mm INSERT	4
21	FWM12	M12 FLAT WASHER	122
22	FWM20	M20 FLAT WASHER	8
23	M12	M12 NYLOC NUT	104
24	M12x30SZP	M12x30 SET BOLT	12
25	M12x35BZP	M12x35 BOLT	4
26	M20	M20 NYLOC NUT	2
27	M20x120BZP	M20x120 BOLT	2
28	M6	M6 NYLOC NUT	2
29	M6x40SZP	M6x40 SET BOLT	2

* - further breakdown provided

MJ71-240FM - General Assembly



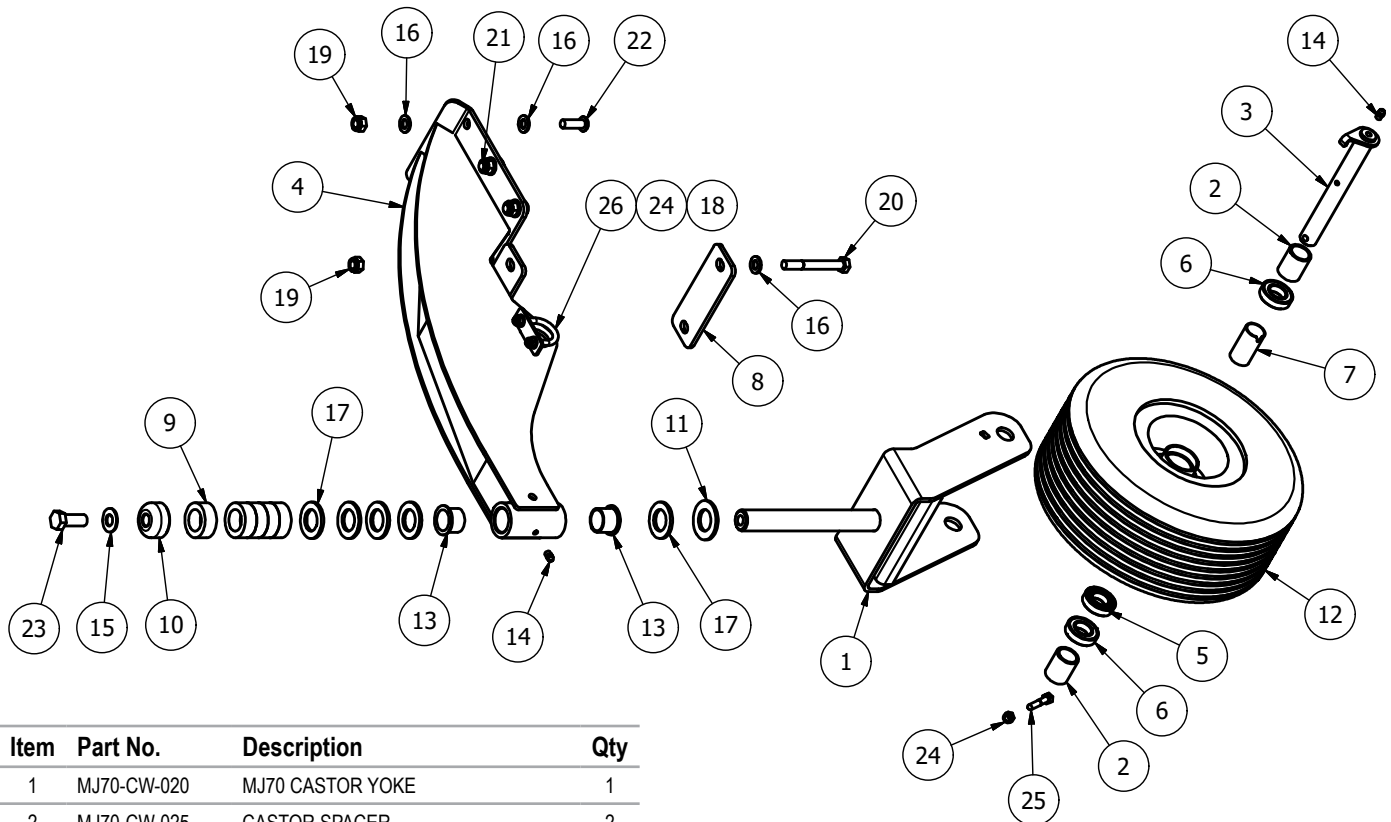
MJ71-240FM - Parts List

Item	Part No.	Description	Qty
1	MJ70-240-FMGF02	FLAP PIVOT SHAFT	1
2	MJ70-240-FMGF15	GUARD TUBE	1
3	SW-190-FLPM01	LINK PIN MOUNT	1
4	SW-190-FLPM01H	LINK PIN MOUNT	1
5*	SW2-CW-01	SWIFT CASTOR (FRONT)	2
6	SW2-240FM-LK01	FRONT MOUNT LINKAGE	1
7	SW2-240FM-LK01H	LINKAGE MOUNT	1
8	BAN80X180	GUARD FLAP 80x155	28
9	GB.03512	6 SPLINE 'T' BOX 1:1	1
10	S96	DIA 5/8"x1 1/8"x1/2" COLLAR	2
11	SW-FM-C12	SWIFT A FRAME CAT 1-2	1
12	WS602256	2400 SHEARBOLT / OR	1
13	SW2-240-FMGF01	FLAP SUPPORT (FRONT)	2
14	111044	DIA 26-30mm INSERT	10

15	11874	CAT 1/2 LINK PIN	2
16	3234	CAT 1/2 TOP LINK PIN	1
17	37	LINCH PIN DIA 6	1
18	AN099/10	LINCH PIN DIA 9.5	2
19	FWM12	M12 FLAT WASHER	126
20	FWM20	M20 FLAT WASHER	8
21	M12	M12 NYLOC NUT	108
22	M12x30SZP	M12x30 SET BOLT	12
23	M12x35BZP	M12x35 BOLT	4
24	M20	M20 NYLOC NUT	2
25	M20x120BZP	M20x120 BOLT	2
26	M6	M6 NYLOC NUT	2
27	M6x40SZP	M6x40 SET BOLT	2

* - further breakdown provided

MJ71 - Wheel Assembly (SW2-CW-01)

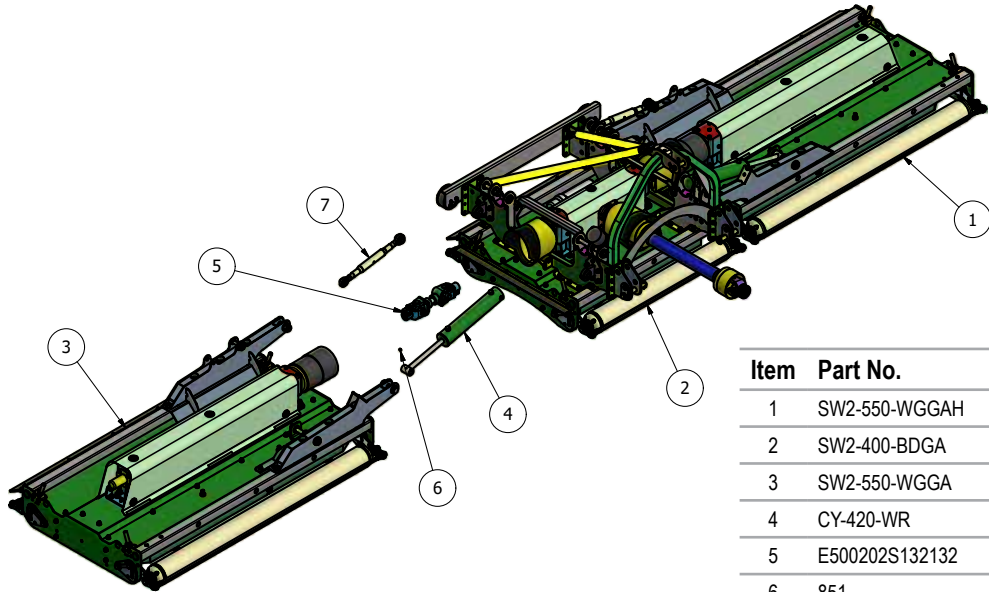


Item	Part No.	Description	Qty
1	MJ70-CW-020	MJ70 CASTOR YOKE	1
2	MJ70-CW-025	CASTOR SPACER	2
3	RMCW-030	CASTOR AXLE	1
4	SW2-CW-02	SWIFT CASTOR STAND	1
5	6005	47x25x12 DEEP GROOVE	1
6	6005RS	47x25x12 DEEP GROOVE	2
7	RMCW-033	BEARING SPACER TUBE	1
8	SW2-CW-07	NARROW CASTOR MOUNT	1
9	RM2-L019	20mm HEIGHT ADJUSTOR	5
10	RM2-L020	CASTOR TOP	1
11	0051300000VR	NYLON WASHER 56x31x4	1
12	15x6-00-6	WHEEL 364x151mmx 6 PLY (TUBE)	1
13	3026DU	30x34x26 FLANGE BUSH	2
14	851	GREASE NIPPLE M8x1.25 STR	2

15	DSW34	DISC SPRING 34x16.3x2	1
16	FWM12	M12 FLAT WASHER	14
17	FWM30	M30 FLAT WASHER	5
18	FWM8	M8 FLAT WASHER	2
19	M12	M12 NYLOC NUT	8
20	M12x100BZP	M12x100 BOLT	2
21	M12x30SKBH	M12x30 SOCKET BUTTON HEAD 10.9	4
22	M12x35SKBH	M12x35 SOCKET BUTTON HEAD 10.9	2
23	M16x40SZP	M16x40 SET BOLT	1
24	M8	M8 NYLOC NUT	3
25	M8x40BZP	M8x40 BOLT	1
26	S8874-A	M8xDIA 35 U-BOLT (1 3/8")	1

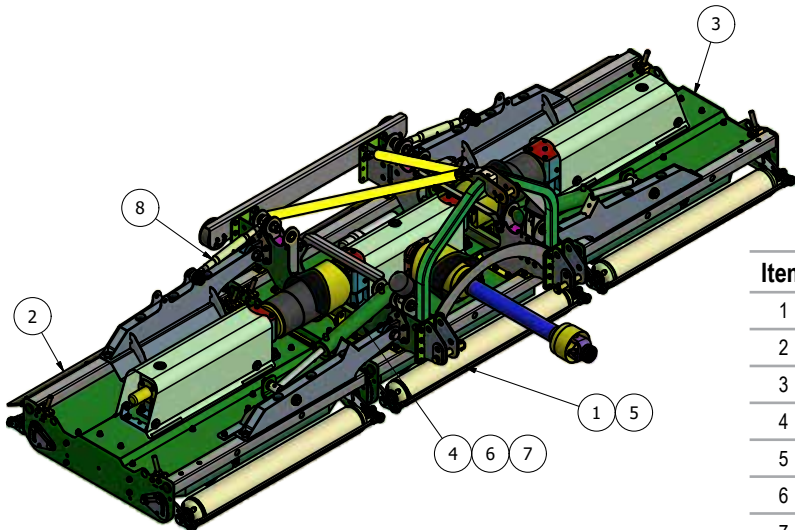
MJ71 Spare Parts - MJ71-540/400/340

MJ71-540 - Overview



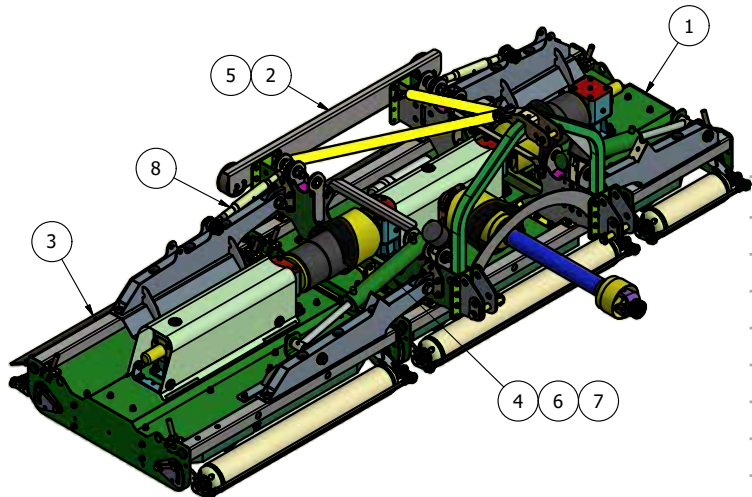
Item	Part No.	Description	Qty
1	SW2-550-WGGAH	550 WING	1
2	SW2-400-BDGA	400/550 SWIFT BODY	1
3	SW2-550-WGGA	SWIFT 550 WING	1
4	CY-420-WR	CYCLONE WING RAM	2
5	E500202S132132	CLAMP COLLAR PTO	2
6	851	GREASE NIPPLE M8x1.25 STR	2
7	S482-A	CAT 1-2 TOP LINK	2

MJ71-400 - Overview



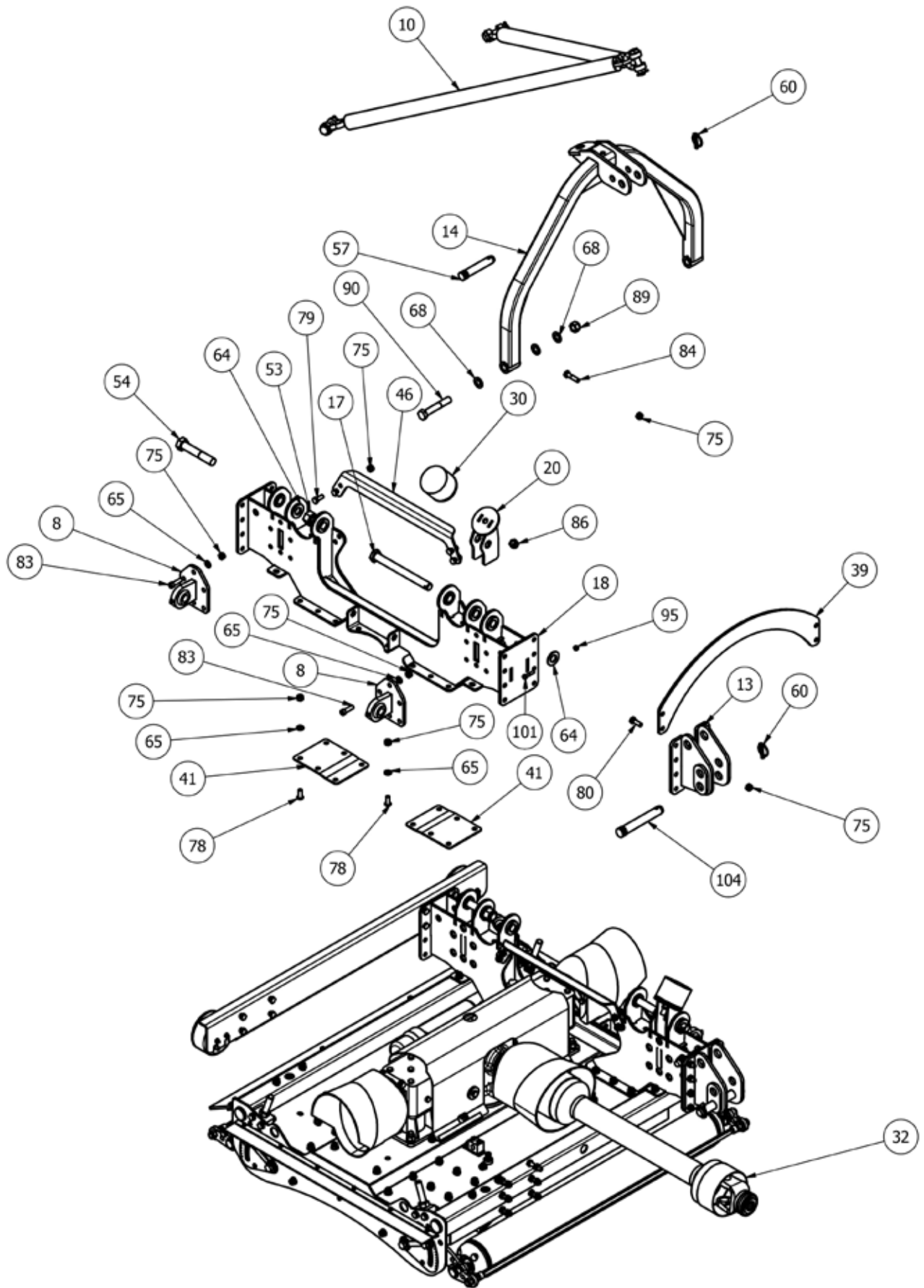
Item	Part No.	Description	Qty
1	SW2-400-BDGA	400/550 SWIFT BODY	1
2	SW2-400-WGGA	SWIFT 410 WING	1
3	SW2-400-WGGAH	SWIFT 400 WING	1
4	CY-350-WR	CYCLONE WING RAM	2
5	E500202S132132	CLAMP COLLAR PTO	2
6	8-6-7-00161	3/8" BREATHER PLUG (68085600)	2
7	851	GREASE NIPPLE M8x1.25 STR	2
8	S482-A	CAT 1-2 TOP LINK	2

MJ71-340 - Overview

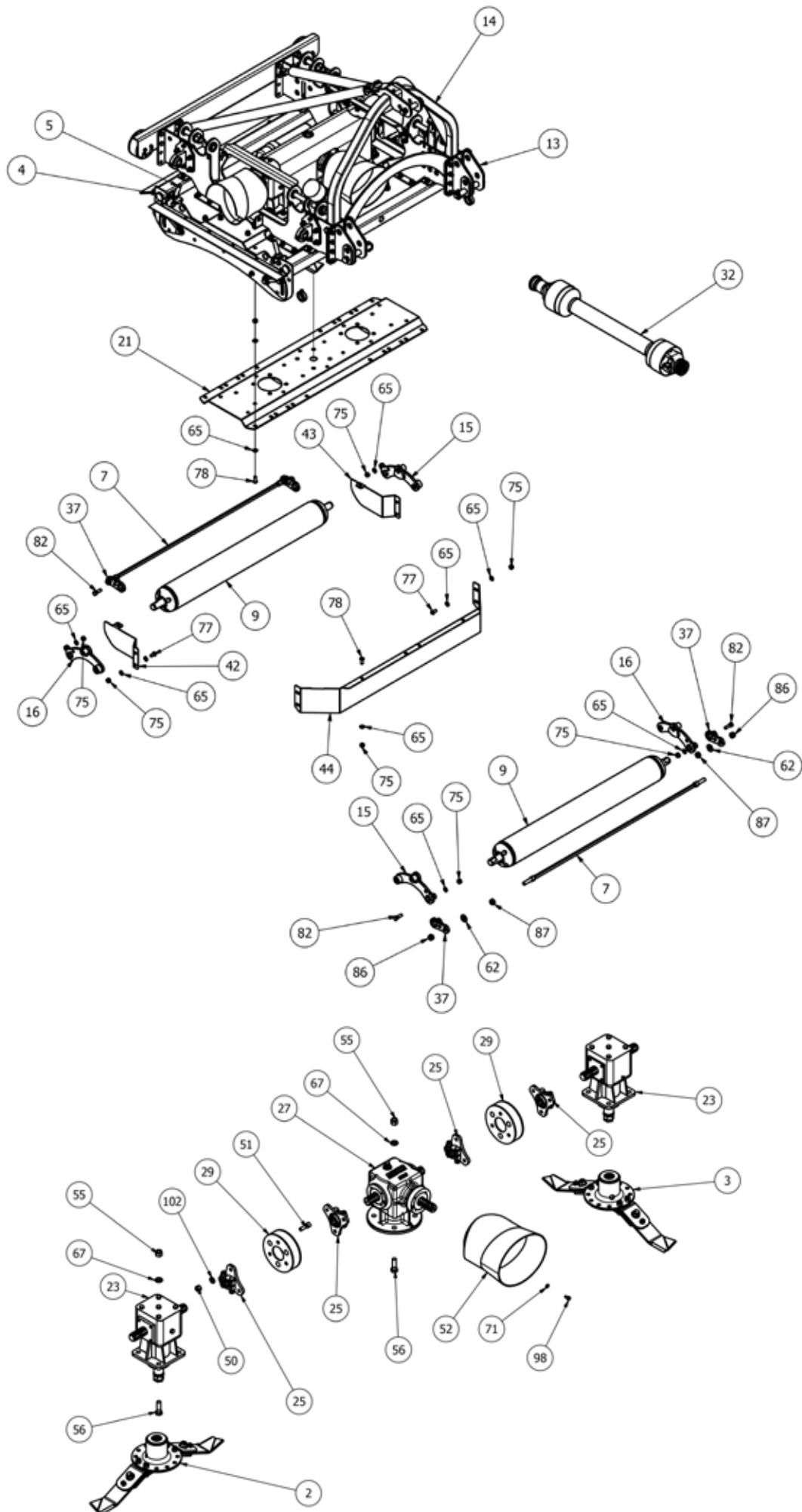


Item	Part No.	Description	Qty
1	SW2-270-WGGAH	SWIFT 270 WING	1
2	SW2-400-BDGA	400/550 SWIFT BODY	1
3	SW2-400-WGGA	SWIFT 410 WING	1
4	CY-350-WR	CYCLONE WING RAM	2
5	E500202S132132	CLAMP COLLAR PTO	2
6	8-6-7-00161	3/8" BREATHER PLUG (68085600)	2
7	851	GREASE NIPPLE M8x1.25 STR	2
8	S482-A	CAT 1-2 TOP LINK	2

MJ71-340/400/540 Body



MJ71-340/400/540 Body

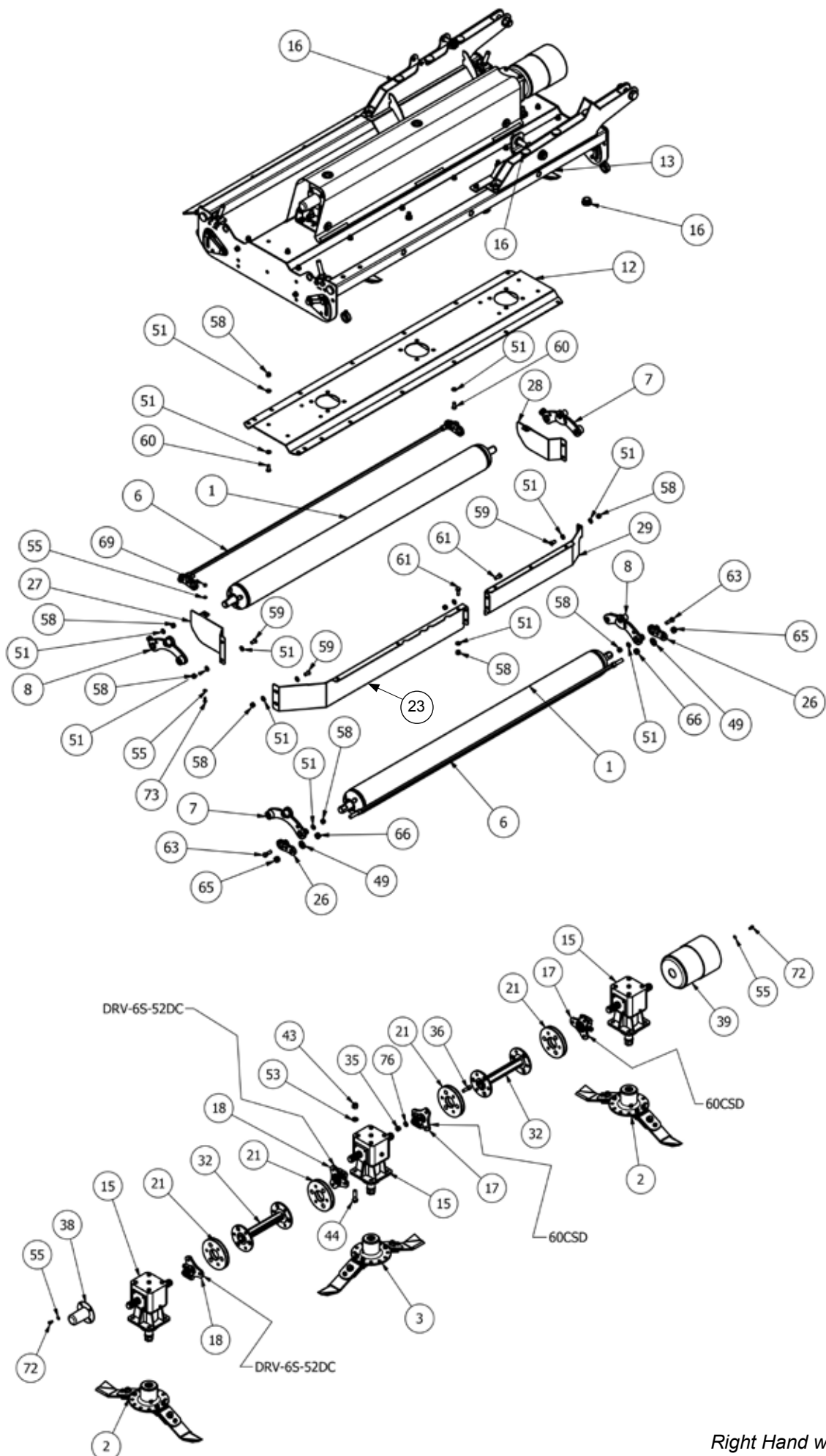


MJ71-340/400/540 Body- Parts List

Item	Part No.	Description	Qty
1	11RM-C16	MODIFIED OVAL GUARD	2
2	725-BLD4-FL	725 FIXED BLADE (Anti_Clk)	1
3	725-BLD4-FR	725 FIXED BLADE (Clk)	1
4	8400RM-HG55	M20 ADJUSTER BLOCK	4
5	8400RM-HG65	M20 THREADED ADJUSTER	4
6	MJ70-320-HYD05	HYDRAULIC BLOCK	2
7	SW2-400-BSCRPR-03	400 BODY SCRAPER BAR	2
8	SW2-400-PVE01	WING PIVOT EYE	4
9	SW2-400-ROLB	400 BODY ROLLER	2
10	SW2-400-STRP01	400 SWIFT CHAIN SLING	1
11	11RM-C10	COVER PIVOT	2
12	11RM-C11	COVER PIVOT	2
13	2800CM-LK	LOWER LINK MOUNT	2
14	3000T-AF-01	3000T A-FRAME	1
15	8400RM-RPV01	ROLLER PIVOT	2
16	8400RM-RPV10	ROLLER PIVOT	2
17	MJ30-350-LK30	PIVOT PIN	2
18	SW2-270-LK01	LINKAGE/WING MOUNT	2
19	SW2-400-BD01	400 BODY	1
20	SW2-400-BF01	BUFFER STAND	2
21	SW2-400-GBR01	BODY UNDERSIDE TROUGH	1
22	11000RM2-CV40	EDGE RUBBER	2
23	LF205TH	6 SPLINE 'T' BOX RATIO 1.92	2
24	5582	DIA 38.3-42mm INSERT	4
25	CM25-DRV	6 SPLINE STAR DRIVE	4
26	LS002	ANTI VIBRATION RUBBER	4
27	GB.03499	6 SPLINE 'T' BOX 1:1.9 3-way	1
28	MJ40-270-RW01	RUBBER WASHER	8
29	MJRC-113	113 PCD RUBBER COUPLING	2
30	MOT75	DIA 100x75 BUFFER	2
31	SW2-270-DF01	RUBBER FLAP	1
32	V600810ENC12RB2	V60 SHEARBOLT / OR	1
33	11000RM2-CV41	EDGE RUBBER CLAMP	2
34	11RM-C14	COVER MOUNT	2
35	8400RM-HG03	HEIGHT INDICATOR	4
36	8400RM-HG04	HEIGHT GUIDE	4
37	SCRPR-SQ12-02	SKT HEAD SCRAPER MOUNT	4
38	SW2-270-CV01	BODY RUBBER CLAMP	1
39	SW2-550-LK01	LINKAGE TIE BASE	1
40	MJ30-350-LK20	LINKAGE BRACE	1
41	SW-240-LM09	SUPPORT PLATE	4
42	SW2-270-DF03	WINGED REAR DEFLECTOR	1
43	SW2-270-DF03H	REAR DEFLECTOR	1
44	SW2-400-AF01	AERO-FOIL (BODY)	1
45	SW2-400-CV01	400 BODY COVER	1
46	SW2-400-LK04	TOP LINKAGE TIE	2
47	SW2-550-CV21	GUARD BASE MOUNT	2
48	RM-RSN3	SHAFT COLLAR DIA 35	4
49	111044	DIA 26-30mm INSERT	8
50	12HEX109	1/2F HEX 10.9	12
51	12x112FSKS	1/2"x1 1/2" FINE SKT HEAD 12.9	12
52	190.000.545	PTO GUARD (EXT OVAL)	1

53	1F	1" FINE NYLOC NUT	2
54	1x512FBZP	1"x5 1/2" FINE BOLT	2
55	5/8F	5/8" FINE NYLOC NUT	12
56	58x2FBZP	5/8"x2" FINE BOLT	12
57	81	CAT 2 PIN DIA 25.4x110mm	1
58	851	GREASE NIPPLE M8x1.25 STR	4
59	870	GREASE NIPPLE M8x90x1.25P	4
60	AN099/10	LINCH PIN DIA 9.5	3
61	CP176-181MG1	45mm INSERT	1
62	CW39174	DISC SPRING 39x17x4	12
63	DH-10404	DOCUMENT HOLDER 350x85	1
64	FW1	DIA 1" FLAT WASHER	4
65	FWM12	M12 FLAT WASHER	128
66	FWM12XL	M12 FLAT WASHER (X-LARGE)	4
67	FWM16	M16 FLAT WASHER	12
68	FWM20	M20 FLAT WASHER	6
69	FWM5	M5 FLAT WASHER	4
70	FWM6	M6 FLAT WASHER	4
71	FWM8	M8 FLAT WASHER	20
72	G1106	BRASS TAP CONNECTOR	2
73	I-257	3/4x1/2 REDUCER BUSH	2
74	LALK027	LED LIGHT KIT (FULL)	2
75	M12	M12 NYLOC NUT	144
76	M12x100BZP	M12x100 BOLT	2
77	M12x25SKBH	M12x25 SKT BUTTON HD 10.9	8
78	M12x30SKBH	M12x30 SKT BUTTON HD 10.9	52
79	M12x30SZP	M12x30 SET BOLT	8
80	M12x35BZP	M12x35 BOLT	24
81	M12x35SKBH	M12x35 SKT BUTTON HD 10.9	10
82	M12x40BZP	M12x40 BOLT	4
83	M12x40SKS	M12x40 SKT HEAD SCREW	24
84	M12x50BZP	M12x50 BOLT	4
85	M12x60BZP	M12x60 BOLT	8
86	M16	M16 NYLOC NUT	6
87	M16HEX	M16 PLAIN NUT	4
88	M16x50SZP	M16x50 SET BOLT	8
89	M20	M20 NYLOC NUT	2
90	M20x120BZP	M20x120 BOLT	2
91	M5	M5 NYLOC NUT	8
92	M5x16SZP	M5x16 SET BOLT	8
93	M6	M6 NYLOC NUT	16
94	M6x20SZP	M6x20 SET BOLT	12
95	M8	M8 NYLOC NUT	16
96	M8x12SKS	M8x12mm SKT HEAD 12.9	4
97	M8x16SKBH	M8x16 SKT BUTTON HEAD 10.9	8
98	M8x16SZP	M8x16 SET BOLT	12
99	M8x20SKBH	M8x20 SKT BUTTON HEAD 10.9	2
100	M8x30SKBH	M8x30 SKT BUTTON HEAD 10.9	4
101	M8x40BZP	M8x40 BOLT	2
102	NL12SP	M12 SP NORDLOCK	12
103	NL8SP	M8 SP NORDLOCK	8
104	S112	CAT 2 PIN DIA 28.5x159mm	2

MJ71-540 Wing



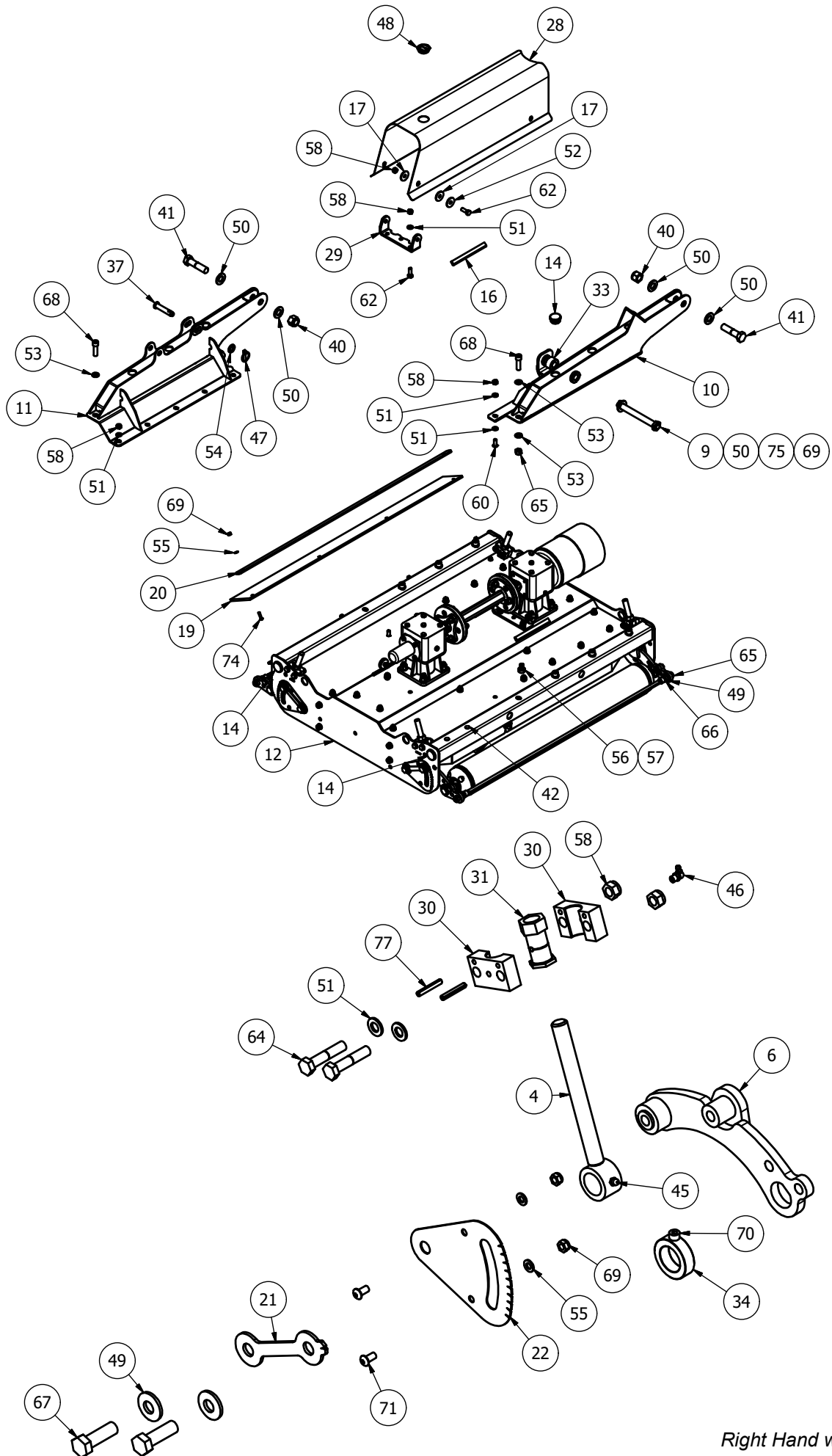
Right Hand wing shown

MJ71-540 Wing - Parts list

Item	Part No.	Description	Qty
1	19000RM-WR01	MJ70-550 WING ROLLER	2
2	725-BLD4-FL	725 FIXED BLADE (Anti_Clk)	2
3	725-BLD4-FR	725 FIXED BLADE (Clk)	1
4	8400RM-HG55	M20 ADJUSTER BLOCK	4
5	8400RM-HG65	M20 THREADED ADJUSTER	4
6	SW2-540-BSCRPR-01	540 WING SCRAPER BAR	2
7	8400RM-RPV01	ROLLER PIVOT	2
8	8400RM-RPV10	ROLLER PIVOT	2
9	SW2-400-LK05	WING PIVOT PIN	1
10	SW2-400-WA01	WING ARM	1
10	SW2-400-WA01H	WING ARM (Left wing)	1
11	SW2-400-WA07H	WING ARM	1
11	SW2-400-WA07	WING ARM (Left wing)	1
12	SW2-550-GBR01	WING UNDERSIDE TROUGH	1
13	SW2-550-WG01	550 WING	1
13	SW2-550-WG01H	550 WING (Left wing)	1
14	SW2-550-DF01	WING RUBBER FLAP	1
15	LF205TH	6 SPLINE 'T' BOX RATIO 1.92	3
16	5582	DIA 38.3-42mm INSERT	18
17	60CSD	60mm STAR DRIVE	2
18	DRV-6S-52DC	6 SPLINE 50mm DRIVE	2
19	LS002	ANTI VIBRATION RUBBER	6
20	MJ40-270-RW01	RUBBER WASHER	8
21	MJRC-23	113 PCD COUPLING 4mm PLT	4
22	19000RM-CV53	WING RUBBER CLAMP	1
23	8400RM-AF03	AERO-FOIL (8400)	1
23	8400RM-AF03H	AERO-FOIL (8400) (Left wing)	1
24	8400RM-HG03	HEIGHT INDICATOR	4
25	8400RM-HG04	HEIGHT GUIDE	4
26	SCRPR-SQ12-02	SKT HEAD SCRAPER MOUNT	4
27	SW2-240-DF02	REAR DEFLECTOR	1
27	SW2-240-DF02H	REAR DEFLECTOR (Left wing)	1
28	SW2-270-DF03H	REAR DEFLECTOR	1
28	SW2-270-DF03	REAR DEFLECTOR (Left wing)	1
29	SW2-400-AF02	WING AERO-FOIL	1
29	SW2-400-AF02H	WING AERO-FOIL (Left wing)	1
30	SW2-550-CV02	550 COVER (WING)	1
31	SW2-550-CV15	GUARD BASE MOUNT	2
32	DRV-RC-SWT2-410	SW2-410 DRIVE	2
33	MJ30-350-WA11	RAM SPACER	1
34	RM-RSN3	SHAFT COLLAR DIA 35	4

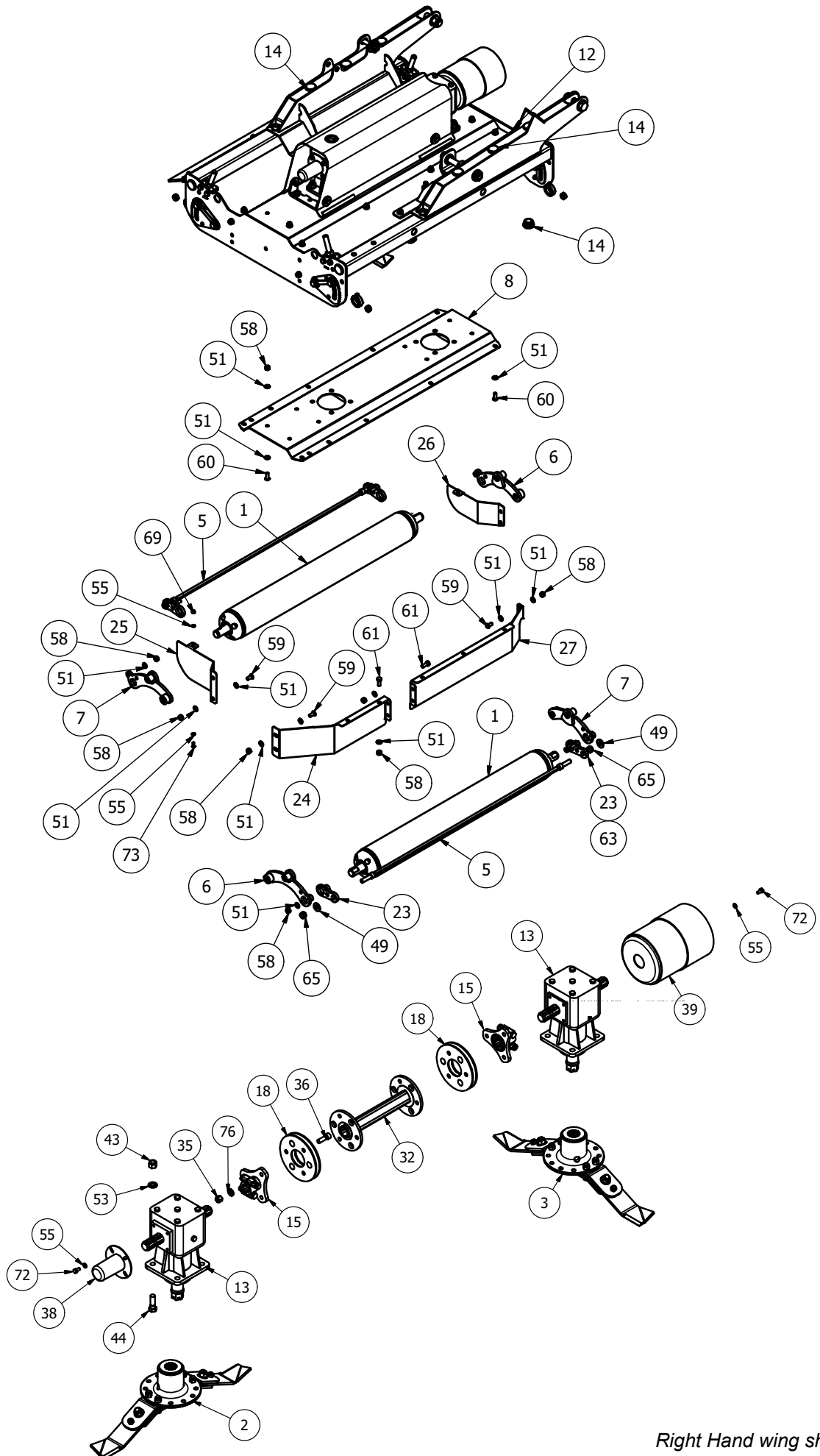
35	12HEX109	1/2F HEX 10.9	24
36	12x112FSKS	1/2"x1 1/2" FINE SKT HEAD 12.9	24
37	15012	CAT 1 PIN DIA 19x76mm	1
38	190592	PTO HAT	1
39	190760	GUARD (COVER 760/BASE 661)	1
40	1F	1" FINE NYLOC NUT	2
41	1x4FBZP	1"x4" FINE BOLT	2
42	465684	DIA 14mm INSERT	4
43	5/8F	5/8" FINE NYLOC NUT	12
44	58x2FBZP	5/8"x2" FINE BOLT	12
45	851	GREASE NIPPLE M8x1.25 STR	4
46	870	GREASE NIPPLE M8x90x1.25P	4
47	AN099/10	LINCH PIN DIA 9.5	1
48	CP176-181MG1	45mm INSERT	2
49	CW39174	DISC SPRING 39x17x4	12
50	FW1	DIA 1" FLAT WASHER	5
51	FWM12	M12 FLAT WASHER	92
52	FWM12XL	M12 FLAT WASHER (EX-LARGE)	4
53	FWM16	M16 FLAT WASHER	28
54	FWM20	M20 FLAT WASHER	1
55	FWM8	M8 FLAT WASHER	26
56	G1106	BRASS TAP CONNECTOR	2
57	I-257	3/4x1/2 REDUCER BUSH	2
58	M12	M12 NYLOC NUT	62
59	M12x25SKBH	M12x25 SKT BUTTON HEAD 10.9	8
60	M12x30SKBH	M12x30 SKT BUTTON HEAD 10.9	26
61	M12x30SZP	M12x30 SET BOLT	8
62	M12x35BZP	M12x35 BOLT	8
63	M12x40BZP	M12x40 BOLT	4
64	M12x60BZP	M12x60 BOLT	8
65	M16	M16 NYLOC NUT	12
66	M16HEX	M16 PLAIN NUT	4
67	M16x50SZP	M16x50 SET BOLT	8
68	M16x55SKZP129	M16x55 SKT HEAD 12.9	8
69	M8	M8 NYLOC NUT	17
70	M8x12SKS	M8x12mm SKT HEAD 12.9	4
71	M8x16SKBH	M8x16 SKT BUTTON HEAD 10.9	8
72	M8x16SZP	M8x16 SET BOLT	8
73	M8x20SKBH	M8x20 SKT BUTTON HEAD 10.9	2
74	M8x30SKBH	M8x30 SKT BUTTON HEAD 10.9	6
75	M8x40BZP	M8x40 BOLT	1
76	NL12SP	M12 SP NORDLOCK	24

MJ71-400/340 Wing



Right Hand wing shown

MJ71-400/340 Wing

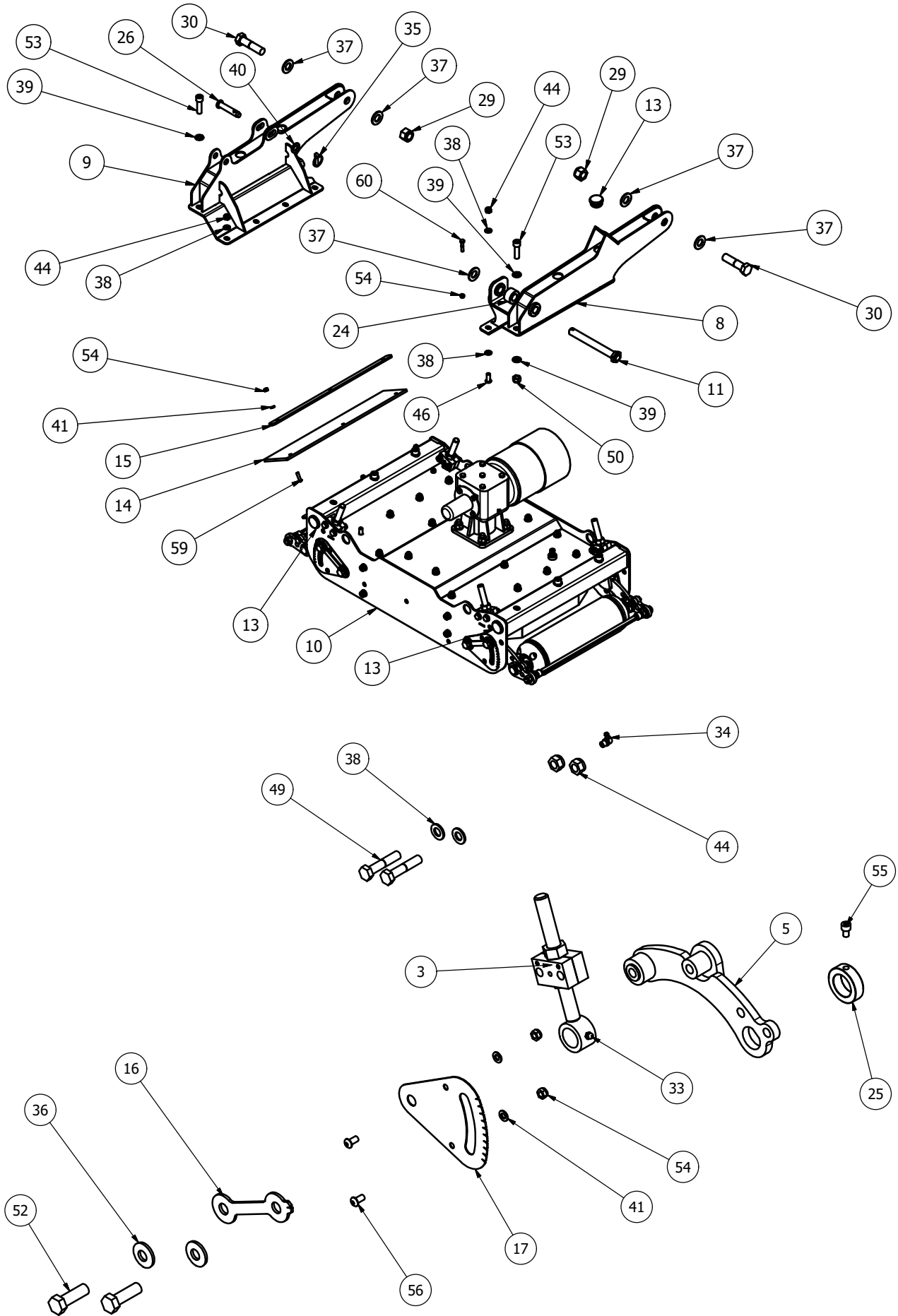


Right Hand wing shown

MJ71-400/340 Wing - Parts List

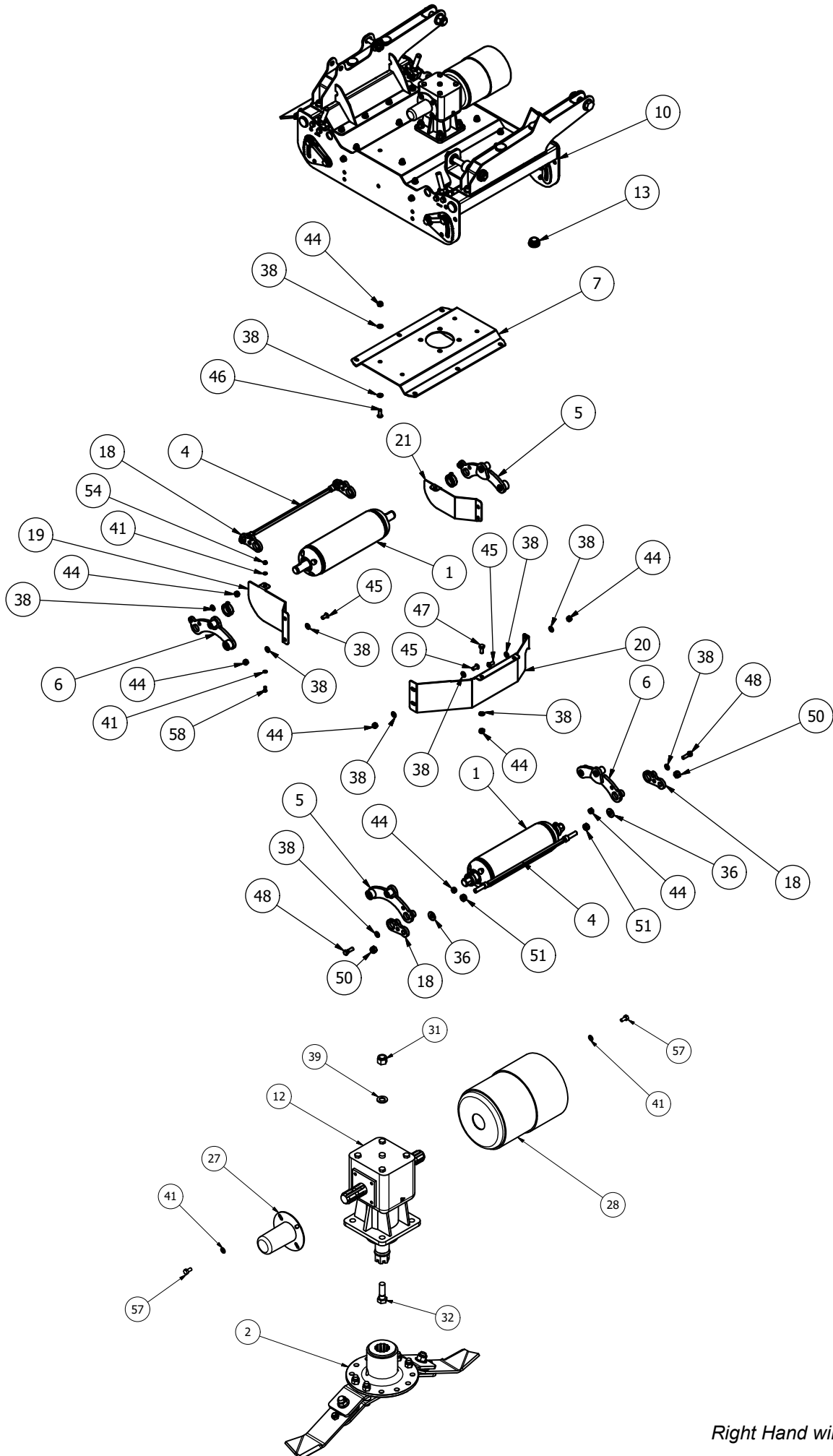
Item	Part No.	Description	Qty
1	15000RM2-WR01	410 WING ROLLER	2
2	725-BLD4-FL	725 FIXED BLADE (Anti_Clk)	1
3	725-BLD4-FR	725 FIXED BLADE (Clk)	1
4	8400RM-HG65	M20 THREADED ADJUSTER	4
5	SW2-400-BSCRPR-05	400 WING SOCKET SCRAPER BAR	2
6	8400RM-RPV01	ROLLER PIVOT	2
7	8400RM-RPV10	ROLLER PIVOT	2
8	SW2-400-GBR03	WING UNDERSIDE TROUGH	1
9	SW2-400-LK05	WING PIVOT PIN	1
10	SW2-400-WA01	WING ARM	1
10	SW2-400-WA01H	WING ARM (Left wing)	1
11	SW2-400-WA07H	WING ARM	1
11	SW2-400-WA07	WING ARM (Left wing)	1
12	SW2-400-WG01	400 WING	1
12	SW2-400-WG01H	400 WING (Left wing)	1
13	LF205TH	6 SPLINE 'T' BOX RATIO 1.92	2
14	5582	DIA 38.3-42mm INSERT	18
15	60CSD	60mm STAR DRIVE	2
16	LS002	ANTI VIBRATION RUBBER	4
17	MJ40-270-RW01	RUBBER WASHER	8
18	MJRC-23-40	23mm COUPLING 40 SHORE	2
19	SW2-400-DF01	WING RUBBER FLAP	1
20	15000RM2-CV53	WING RUBBER CLAMP	1
21	8400RM-HG03	HEIGHT INDICATOR	4
22	8400RM-HG04	HEIGHT GUIDE	4
23	SCRPR-SQ12-02	SOCKET HEAD SCRAPER MOUNT	4
24	15000RM2-AF01	AERO-FOIL (MJ70-410)	1
24	15000RM2-AF01H	AERO-FOIL (MJ70-410) (Left wing)	1
25	SW2-240-DF02	REAR DEFLECTOR	1
25	SW2-240-DF02H	REAR DEFLECTOR (Left wing)	1
26	SW2-270-DF03H	WING REAR DEFLECTOR	1
26	SW2-270-DF03	WING REAR DEFLECTOR (Left wing)	1
27	SW2-400-AF02	WING AERO-FOIL	1
27	SW2-400-AF02H	WING AERO-FOIL (Left wing)	1
28	SW2-400-CV04	400 COVER (WING)	1
29	SW2-550-CV15	GUARD BASE MOUNT	2
30	8400RM-HG76	HEIGHT PIVOT BLOCK	8
31	8400RM-HG77	M20 HEX ADJUSTER	4
32	DRV-RC-SWT2-410	SW2-410 DRIVE	1
33	MJ30-350-WA11	RAM SPACER	1
34	RM-RSN3	SHAFT COLLAR DIA 35	4
35	12HEX109	1/2F HEX 10.9	12
36	12x112FSKS	1/2"x1 1/2" FINE SKT HD 12.9	12
37	15012	CAT 1 PIN DIA 19x76mm	1
38	190592	PTO HAT	1
39	190760	GUARD (COVER 760/BASE 661)	1
40	1F	1" FINE NYLOC NUT	2
41	1x4FBZP	1"x4" FINE BOLT	2
42	465684	DIA 14mm INSERT	4
43	5/8F	5/8" FINE NYLOC NUT	8
44	58x2FBZP	5/8"x2" FINE BOLT	8
45	851	GREASE NIPPLE M8x1.25 STR	4
46	870	GREASE NIPPLE M8x90x1.25P	4
47	AN099/10	LINCH PIN DIA 9.5	1
48	CP176-181MG1	45mm INSERT	1
49	CW39174	DISC SPRING 39x17x4 (YELLOW)	12
50	FW1	DIA 1" FLAT WASHER	5
51	FWM12	M12 FLAT WASHER	83
52	FWM12XL	M12 FLAT WASHER (EX-LARGE)	4
53	FWM16	M16 FLAT WASHER	24
54	FWM20	M20 FLAT WASHER	1
55	FWM8	M8 FLAT WASHER	24
56	G1106	BRASS TAP CONNECTOR	1
57	I-257	3/4x1/2 REDUCER BUSH	1
58	M12	M12 NYLOC NUT	57
59	M12x25SKBH	M12x25 SKT BTN HD 10.9	8
60	M12x30SKBH	M12x30 SKT BTN HD 10.9	22
61	M12x30SZP	M12x30 SET BOLT	7
62	M12x35BZP	M12x35 BOLT	8
63	M12x40BZP	M12x40 BOLT	4
64	M12x60BZP	M12x60 BOLT	8
65	M16	M16 NYLOC NUT	12
66	M16HEX	M16 PLAIN NUT	4
67	M16x50SZP	M16x50 SET BOLT	8
68	M16x55SKZP129	M16x55 SOCKET HEAD 12.9	8
69	M8	M8 NYLOC NUT	15
70	M8x12SKS	M8x12mm SOCKET HEAD 12.9	4
71	M8x16SKBH	M8x16 SKT BTN HD 10.9	8
72	M8x16SZP	M8x16 SET BOLT	8
73	M8x20SKBH	M8x20 SKT BTN HD 10.9	2
74	M8x30SKBH	M8x30 SKT BTN HD 10.9	4
75	M8x40BZP	M8x40 BOLT	1
76	NL12SP	M12 SP NORDLOCK	12
77	S1215	ROLL PIN DIA 6x40	8

MJ71-340 Wing



Right Hand wing shown

MJ71-340 Wing

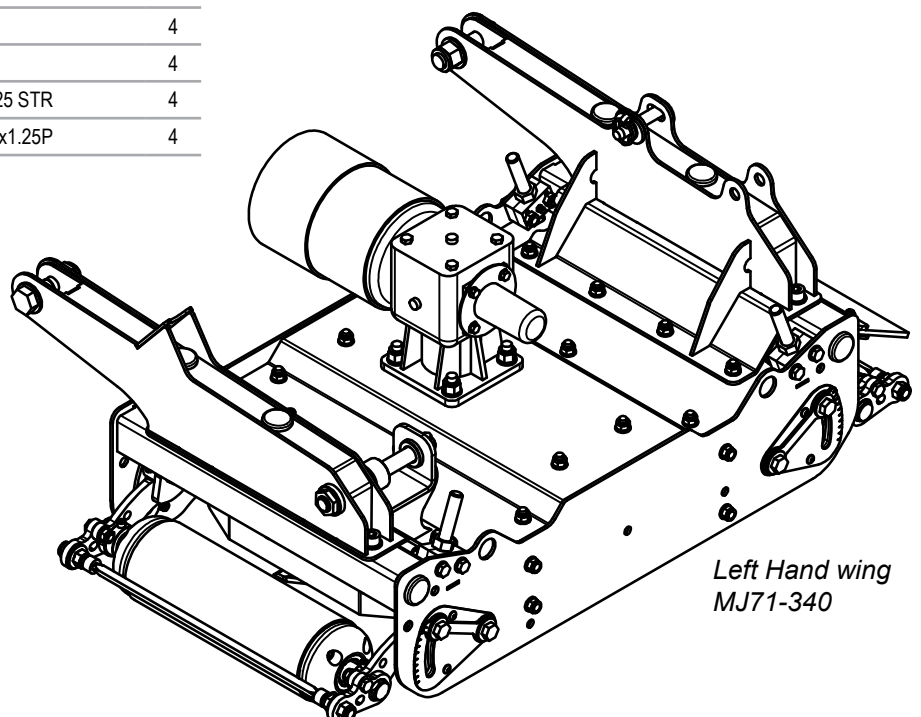


Right Hand wing shown

MJ71-340 Wing - Parts List

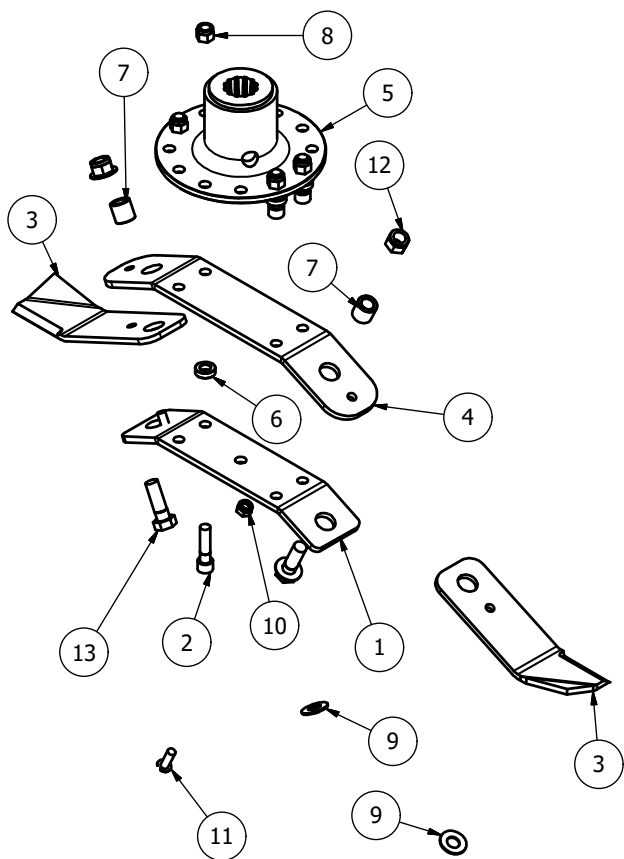
Item	Part No.	Description	Qty
1	11GMROLW-V2	MJ70-270 WING ROLLER	2
2	725-BLD2-FL	725 FIXED BLADE (Anti_Clk)	1
3	8400RM-HG65	M20 THREADED ADJUSTER	4
4	SW2-270-WSCRPR-01	270 WING SOCKET HEAD SCRPR BAR	2
5	8400RM-RPV01	ROLLER PIVOT	2
6	8400RM-RPV10	ROLLER PIVOT	2
7	SW2-270-GBR03	270 WING UNDERSIDE TROUGH	1
8	SW2-270-WA10	SMALL WING ARM	1
9	SW2-270-WA17H	SMALL WING ARM	1
10	SW2-270-WG01	270 WING	1
10	SW2-270-WG01	270 WING (Left wing)	1
11	SW2-400-LK05	WING PIVOT PIN	1
12	LF205TH	6 SPLINE 'T' BOX RATIO 1.92	1
13	5582	DIA 38.3-42mm INSERT	14
14	SW2-270-DF02	RUBBER FLAP	1
15	11000RM2-CV55	WING RUBBER CLAMP	1
16	8400RM-HG03	HEIGHT INDICATOR	4
17	8400RM-HG04	HEIGHT GUIDE	4
18	SCRPR-SQ12-02	SOCKET HEAD SCRAPER MOUNT	4
19	SW2-240-DF02	REAR DEFLECTOR	1
19	SW2-240-DF02H	REAR DEFLECTOR (Left wing)	1
20	SW2-270-AF01	270 WING AERO-FOIL	1
20	SW2-270-AF01H	270 WING AERO-FOIL (Left wing)	1
21	SW2-270-DF03H	WING REAR DEFLECTOR	1
21	SW2-270-DF03	WING REAR DEFLECTOR (Left wing)	1
22	8400RM-HG76	HEIGHT PIVOT BLOCK	8
23	8400RM-HG77	M20 HEX ADJUSTER	4
24	MJ30-350-WA11	RAM SPACER	1
25	RM-RSN3	SHAFT COLLAR DIA 35	4
26	15012	CAT 1 PIN DIA 19x76mm	1
27	190592	PTO HAT	1
28	190760	GUARD (COVER 760/BASE 661)	1
29	1F	1" FINE NYLOC NUT	2
30	1x4FBZP	1"x4" FINE BOLT	2
31	5/8F	5/8" FINE NYLOC NUT	4
32	5/8x2FBZP	5/8"x2" FINE BOLT	4
33	851	GREASE NIPPLE M8x1.25 STR	4
34	870	GREASE NIPPLE M8x90x1.25P	4

35	AN099/10	LINCH PIN DIA 9.5	1
36	CW39174	DISC SPRING 39x17x4 (YELLOW)	12
37	FW1	DIA 1" FLAT WASHER	5
38	FWM12	M12 FLAT WASHER	66
39	FWM16	M16 FLAT WASHER	16
40	FWM20	M20 FLAT WASHER	1
41	FWM8	M8 FLAT WASHER	23
42	G1106	BRASS TAP CONNECTOR	1
43	I-257	3/4x1/2 REDUCER BUSH	1
44	M12	M12 NYLOC NUT	40
45	M12x25SKBH	M12x25 SOCKET BUTTON HEAD 10.9	8
46	M12x30SKBH	M12x30 SOCKET BUTTON HEAD 10.9	18
47	M12x30SZP	M12x30 SET BOLT	2
48	M12x40BZP	M12x40 BOLT	4
49	M12x60BZP	M12x60 BOLT	8
50	M16	M16 NYLOC NUT	10
51	M16HEX	M16 PLAIN NUT	4
52	M16x50SZP	M16x50 SET BOLT	8
53	M16x55SKZP129	M16x55 SOCKET HEAD 12.9	6
54	M8	M8 NYLOC NUT	14
55	M8x12SKS	M8x12mm SOCKET HEAD 12.9	4
56	M8x16SKBH	M8x16 SOCKET BUTTON HEAD 10.9	8
57	M8x16SZP	M8x16 SET BOLT	8
58	M8x20SKBH	M8x20 SOCKET BUTTON HEAD 10.9	2
59	M8x30SKBH	M8x30 SOCKET BUTTON HEAD 10.9	3
60	M8x40BZP	M8x40 BOLT	1
61	S1215	ROLL PIN DIA 6x40	8



MJ71 Blades

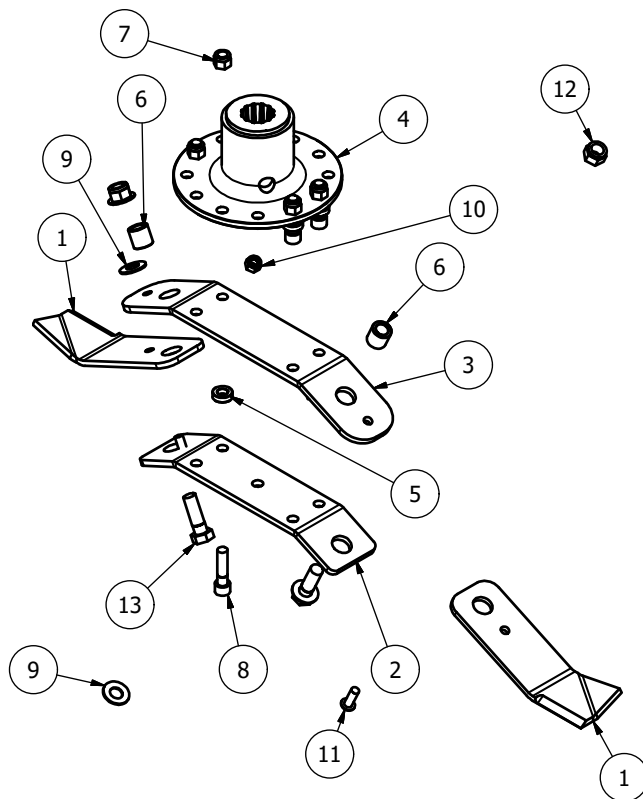
725-BLD4-FL



Item	Part No.	Description	Qty
1	BLDB4-300-25	BLADE BACK (300 CTR 25 deg)	1
2	12x2FSKS	1/2"x2" FINE SOCKET HEAD 12.9	4
3	BLD-25025-AC	BLADE 250xDia 25 (Anti-Clk)	2
4	BLDB4-315-25	BLADE BACK (315 CTR 25 deg)	1
5	DF-BMP	J205 G/BOX BLADE MOUNT	1
6	8SM9-3	BLADE BACK SPACER	4
7	BB25-16-24	BLADE BUSH	2
8	1/2F	1/2" FINE NYLOC NUT	4
9	DSW34	DISC SPRING 34x16.3x2	4
10	M10	M10 NYLOC NUT	2
11	M10x30SKBH	M10x30 SOCKET BTN HEAD 10.9	2
12	M16	M16 NYLOC NUT	2
13	M16x50BZP	M16x50 BOLT	2

2 off	MJ71-190
2 off	MJ71-240
2 off	MJ71-340
3 off	MJ71-400
4 off	MJ71-540

725-BLD4-FR

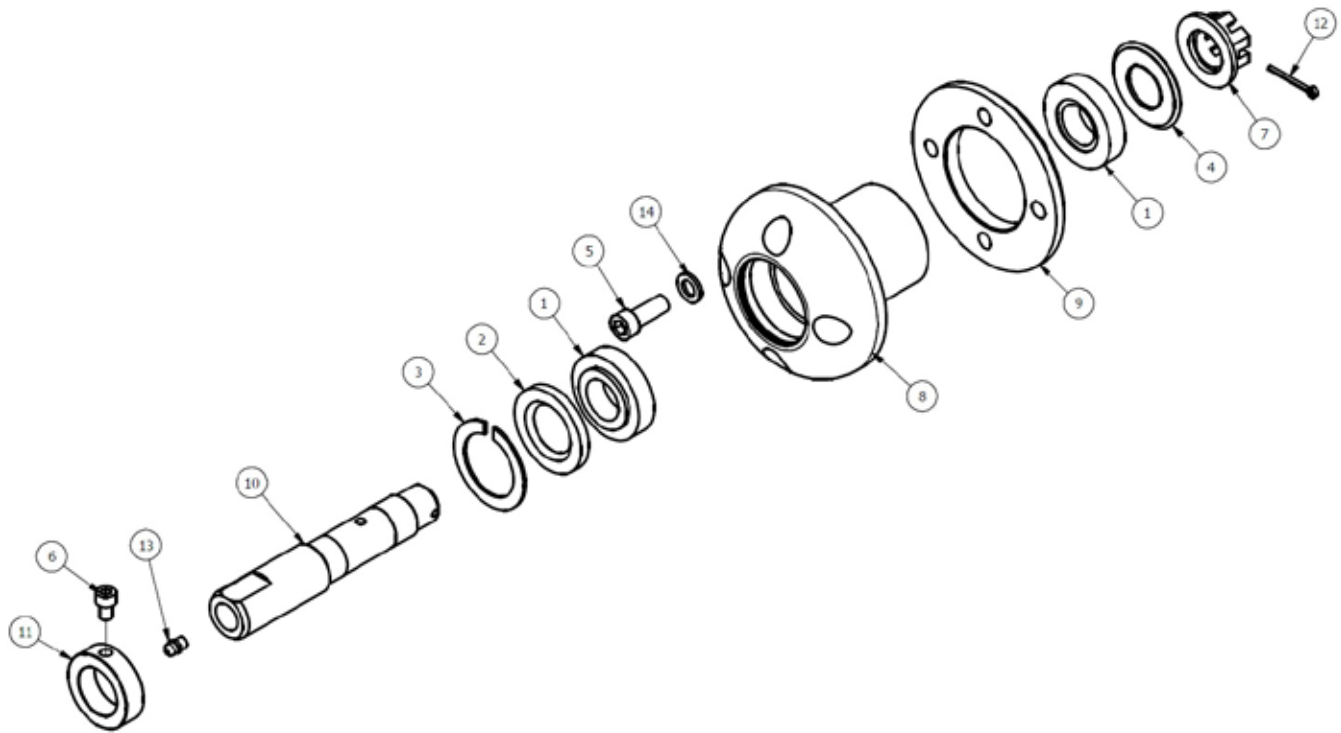


Item	Part No.	Description	Qty
1	BLD-25025-C	BLADE 250xDia 25 (Clk)	2
2	BLDB4-300-25	BLADE BACK (300 CTR 25 deg)	1
3	BLDB4-315-25	BLADE BACK (315 CTR 25 deg)	1
4	DF-BMP	J205 G/BOX BLADE MOUNT	1
5	8SM9-3	BLADE BACK SPACER	4
6	BB25-16-24	BLADE BUSH	2
7	1/2F	1/2" FINE NYLOC NUT	4
8	12x2FSKS	1/2"x2" FINE SOCKET HEAD 12.9	4
9	DSW34	DISC SPRING 34x16.3x2	4
10	M10	M10 NYLOC NUT	2
11	M10x30SKBH	M10x30 SOCKET BTN HEAD 10.9	2
12	M16	M16 NYLOC NUT	2
13	M16x50BZP	M16x50 BOLT	2

1 off	MJ71-190
2 off	MJ71-240
3 off	MJ71-340
3 off	MJ71-400
4 off	MJ71-540

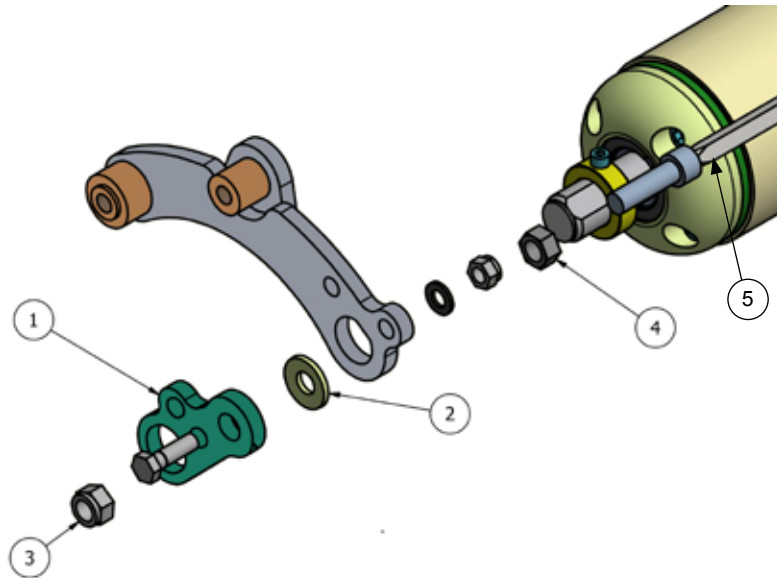
Roller End - Parts List

RM-04RBE



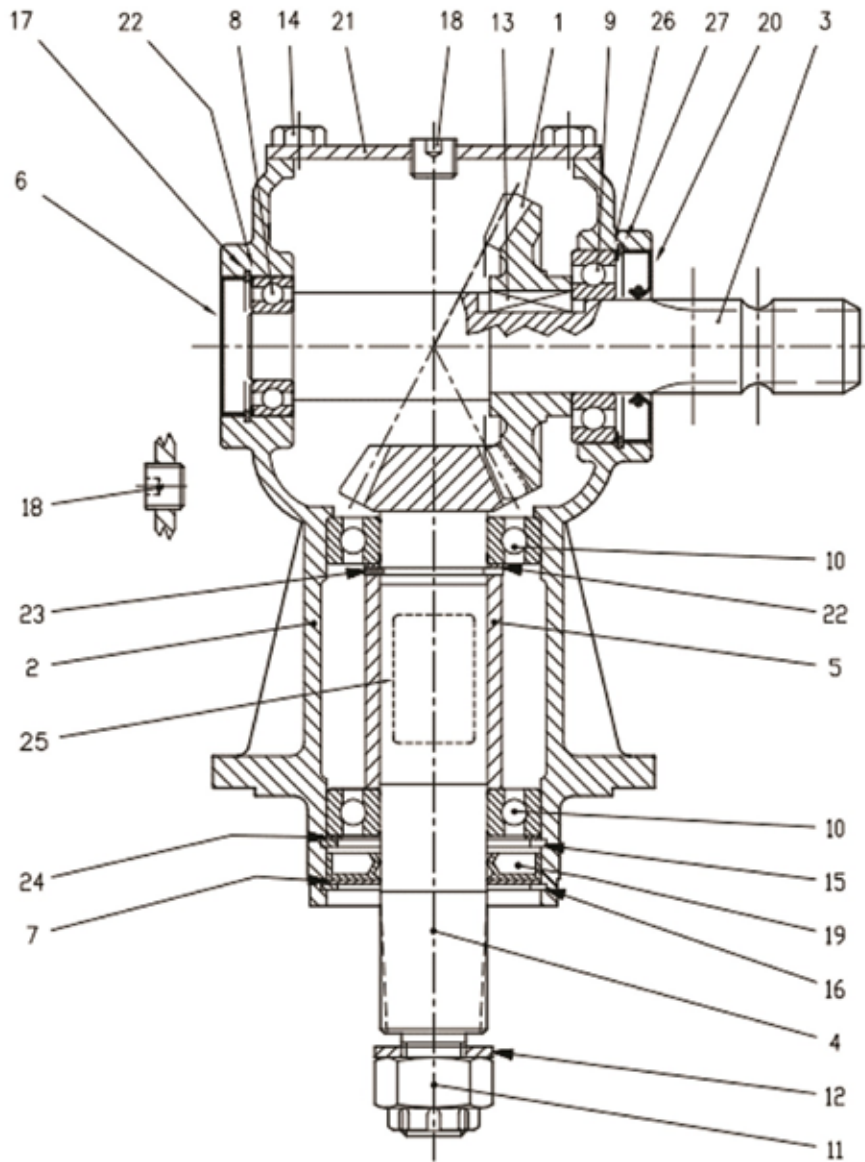
Item	Part No.	Description	Qty
1	30206	TAPER BRG 62x30x17.25	2
2	35627	SEAL 35x62x7	1
3	55112	DIA 62 INT CIRCLIP	1
4	915PG30	WIPE SEAL	1
5	M12x30SK	M12x30 SOCKET HEAD SCREW	4
6	M8x12SK	M8x12mm SOCKET HEAD 12.9	1
7	RM-04NUT	NUT-WASHER WELDMENT	1
8	RM-04REH	ROLLER END HOUSING	1
9	RM-04REP	ROLLER END PLATE	1
10	RM-04RES	ROLLER END SHAFT	1
11	RM-RSN3	SHAFT COLLAR DIA 35	1
12	S1500	SPLIT PIN 1/8"x1 1/2"	1
13	S851	GREASE NIPPLE M8x1.25 STR	1
14	SWM12	M12 SPRING WASHER	4

MJ71 Scraper Bars



Item	Part No.	Description	Qty
1	SCRPR-SQ12-02	SOCKET HEAD SCRAPER MOUNT	2
2	CW39174	DISC SPRING 39x17x4 (YELLOW)	2
3	M16	M16 NYLOC NUT	2
4	M16HEX	M16 PLAIN NUT	4
5	SW2-190-BSCRPR-01	SCRAPER BAR	2 per MJ71-190
5	SW2-240-BSCRPR-01	SCRAPER BAR	2 per MJ71-240
5	SW2-270-WSCRPR-01	SCRAPER BAR	2 per MJ71-340 (wing)
5	SW2-400-BSCRPR-03	SCRAPER BAR	2 per MJ71-340 (body) 2 per MJ71-400 (body) 2 per MJ71-540 (body)
5	SW2-400-BSCRPR-05	SCRAPER BAR	2 per MJ71-340 (wing) 4 per MJ71-400 (wing)
5	SW2-540-BSCRPR-01	SCRAPER BAR	4 per MJ71-540 (wing) 6 per MJ71-600 (body + wing)

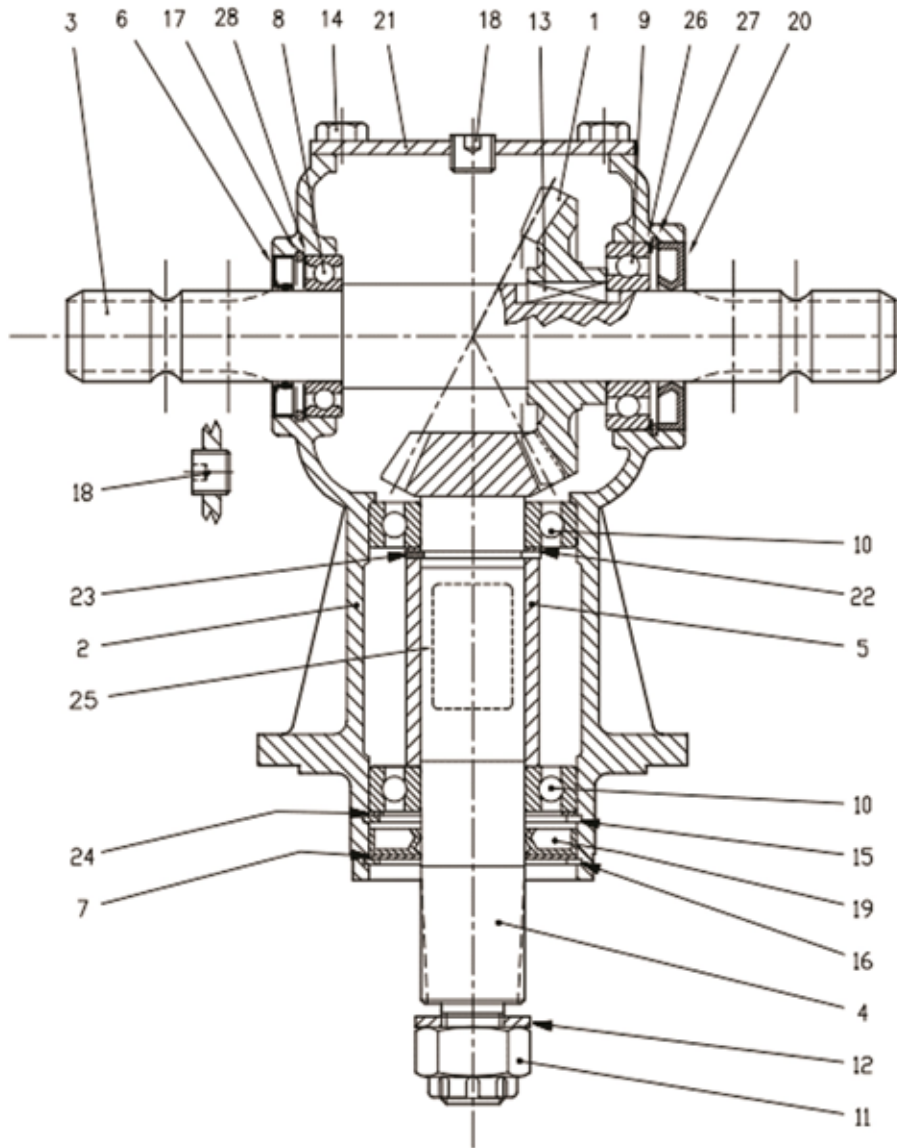
LF205H-205 872-1.92



Item	Part No	Description	Qty
1	0.135.5000.00	Crown Gear Z23 M5	1
2	0.205.0302.00	Casing	1
3	LF135/18	Input Shaft	1
4	0.135.6008.00	Pinion	1
5	LF135/10	Spacer	1
6	8.7.0.00693	Oil Cap	1
7	LF135/4	Protective Washer	1
8	8.0.1.00034	Ball Bearing 6205 (25x52x15)	1
9	LF135/15	Bearing 6207	1
10	LF135/9	Bearing 6208	2
11	LF135/1	Castle Nut	1
12	LF135/2	Bolt Washer 25x44x4	1
13	LF135/19	Parallel Key B 10x8x30	1
14	M10x20SZP	Bolts M10x20	4
15	8.5.2.00030	Snap Ring (80x82.5x2.5)	1

16	LF135/3	8.5.3.00955	Snap Ring SB 81	1
17	8.5.2.01358	8.5.2.01358	Snap Ring (52x55x2.5)	1
18	LF135/13	8.6.6.00201	3/8" Gas Solid Plug	2
19	LF135/5	8.7.1.00748	Dust Lip 40x80x12	1
20	8.7.3.00055	8.7.3.00055	Oil Seal 25x72x10	1
21	0.205.1300.00	0.205.1300.00	cover	1
22	0.244.7500.00	0.244.7500.00	Shim Kit (40.2x51.5)	2
23	8.5.1.00680	8.5.1.00680	Snap ring (40x37x2.5 for shafts)	1
24	0.267.7500.00	0.267.7500.00	Shim Kit (69x79.7) LF135/7	1
25	0.205.7100.00	0.205.7100.00	Grascare Name Plate	1
26	T4A/5	0.248.7500.00	Shim Kit (60.3x71.7)	1
27	8.5.2.00131	8.5.2.00131	Snap Ring (72x75x2.5)	1

LF205TH-205.874-1.92



Item	Part No	Description	Qty
1	0.135.5000.00	Crown Gear Z23 M5	1
2	0.205.0303.00	Casing (LF135/12)	1
3	0.135.2002.00	Shaft (LF135/25)	1
4	0.135.6008.00	Pinion Shaft	1
5	0.135.7105.00	Spacer (LF135/10)	1
6	8.7.3.01259	Double Lip Seal (LF135/14)	1
7	1.135.7100.00	Protective Washer (LF135/4)	1
8	8.0.1.00000	Bearing 6007 (35x62x14)	1
9	8.0.1.00870	Bearing 6207 (LF135/15)	1
10	8.0.1.00871	Bearing 6208 (LF135/9)	2
11	8.2.2.00515	Castle Nut (LF135/1)	1
12	8.3.2.00409	Bolt Washer (LF135/2)	1
13	8.4.1.00993	Parallel Key (LF135/19)	1
14	8.1.1.00054	Bolts M10x20	4
15	8.5.2.00030	Snap Ring (LF135/6)	1
16	8.5.2.00955	Snap Ring (LF135/3)	1

17	85200648	8.5.2.00648	LF205/17 Circlip	1
18	8.6.6.00201	8.6.6.00201	Plug (LF135/13)	2
19	8.7.1.00748	8.7.1.00748 (LF135/5)	Double Lip Seal (40X80X12V)	1
20	8.7.3.00055 (357210)	8.7.3.00055	Oil Seal 35x72x10 (T4A/1)	1
21	0.205.1300.00	0.205.1300.00	Cover (LF205EP)	1
22	0.244.7500.00	0.244.7500.00	Shim Kit	1
23	8.5.1.00680	8.5.1.00680	Snap Ring (40x37.5x2.5) (LF135/7)	1
24	0.267.7500.00	0.267.7500.00	Shim Kit (69x79.7) LF135/7	1
25	N/A	0.205.7100.00	Name Plate	1
26	0.248.7500.00	0.248.7500.00	Shim Kit (60.3x71.7)	1
27	8.5.2.00131	8.5.2.00131 (LF135/27)	LF205/27 Circlip	1
28	0.113.7500.00	0.113.7500.00 (LF135/16)	Shim	1

Warranty: This machine is guaranteed for 12 months. No warranty is given where the machine is being used as a hire machine. Warranty is against faulty workmanship or parts, with the exception of components not of MAJOR'S manufacture or design, i.e. hydraulic components, universally jointed shafts, chains and tyres, etc., which are subject to the original manufacturers conditions. To register your machine for warranty, please go to the support section of our website www.major-equipment.com and enter your details.

MAJOR
WWW.MAJOR-EQUIPMENT.COM

The Grass & Slurry Machinery Specialists
Agricultural ~ Professional Grounds care ~ Industrial

Home Products About Us Gallery Dealers News **Support** Contact Us

You are in: English >> Support

Support

Product Registration

Please click here to register your machine. We are committed to providing you with excellent products and product support. Please register your machine to ensure you get the correct warranty cover and service bulletins.

Product Support

Please click here to access operator manuals.

Dealer Support

Please click here for access to our dealer support area.

Support

- Product Registration
- Operator Manuals & Spare Parts Books
- Dealer Support
- Support Contact
- FAQ

follow us on facebook

Recent News

- ▶ 3100LGP With Raingun
- ▶ New Website Launch!
- ▶ Major Heads For Oz
- ▶ Visit Our Facebook Page
- ▶ 2012 Shows

MAJOR
WWW.MAJOR-EQUIPMENT.COM

Head Office:
Ballyhaunis, Co. Mayo
Ireland
Tel: + 353 (0) 949630572
info@major-equipment.com

UK Office:
Major Ind. Estate, Heysham
Lancs, LA3 3JJ
Tel: + 44 (0) 1524 850501
ukinfo@major-equipment.com

Nederland (& Deutschland):
Postbus 29, NL-7700 AA Dedemsvaart
Nederland
Tel: + 31 (0) 6389 19585
euinfo@major-equipment.com



HEAD OFFICE

Major Equipment Intl Ltd
Ballyhaunis, Co Mayo
Ireland
Tel: +353 (0) 9496 30572

UK OFFICE

Major Equipment Ltd
Major Ind. Estate, Heysham,
Lancs, LA3 3JJ, UK
Tel: +44 (0) 1524 850501

Netherlands & Germany OFFICE

Major Equipment Intl Ltd
Postbus 29, NL-7700 AA
Dedemsvaart, Nederland
Tel: + 31 (0) 6389 19585