



OPERATING INSTRUCTIONS

SISIS EQUIPMENT (Macclesfield) LIMITED, Hurdsfield, Macclesfield, Cheshire Sk10 2LZ, England
Tel (01625) 503030 Fax (01625) 427426 Email info@sisis.com Website www.sisis.com

AUTOSPRED

MACHINE REFERENCE	ASD/33
SERIAL NUMBER
CN CODE	8432 40 10



SPARES HOTLINE 01625 503020
Website www.sisis.com

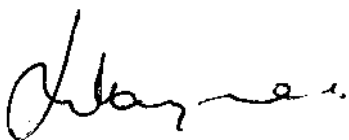
EC DECLARATION OF CONFORMITY

We the undersigned

SISIS EQUIPMENT (Macclesfield) LIMITED
Hurdsfield, Macclesfield, Cheshire SK10 2LZ, England

Certify that the	Spreader
Make	SISIS
Type	AutoSpred
Series	33
Conforms to EC Directives and amendments	2006/42/EC
Standard	BS7370

**This certificate applies only to NEW equipment supplied
by SISIS or our authorised dealer**



J.W. Hargreaves
Director

Certificate Number
CEFS557

We want you to obtain the best performance from this machine. If you have any difficulty in carrying out the following instructions please contact us or your local SISIS Territory Manager or SISIS Dealer.

DESIGN FEATURES

The SISIS AutoSpred pedestrian controlled top dressing machine, has been designed for the purpose of applying top dressings quickly and accurately. The AutoSpred uses the same well proven operating principle as the SISIS PTO driven Powaspred. The ability of the AutoSpred to handle the following materials efficiently gives some indication of its versatility:-

- 1 Top dressing on turf with controlled accuracy
- 2 Redgra and artificial grass surfaces
- 3 Sharp sand for playing field application
- 4 Rock sale for winter maintenance on access roadways, footpaths, car parks etc

The discharge of materials is easily altered by the metering gate lever. The feed control lever varies the application density without having to stop.

The material is distributed by the patented reciprocating feed plate. This keeps the material in a friable form and moves it through the adjustable metering gate onto the revolving brush which, in turn, throws the materials onto the surface. The forward/reverse drive to the wheels is achieved by a hydrostatic axle. This allows the speed range forward and reverse to be infinitely variable. The tyres are slick type on the drive wheels to reduce marking on fine turf.

IMPORTANT POINTS

Always thoroughly clean the AutoSpred after each days work.

If the AutoSpred is used for the application of rock salt, for winter maintenance on footpaths and car parks, ALWAYS ressure wash the machine immediately after use.

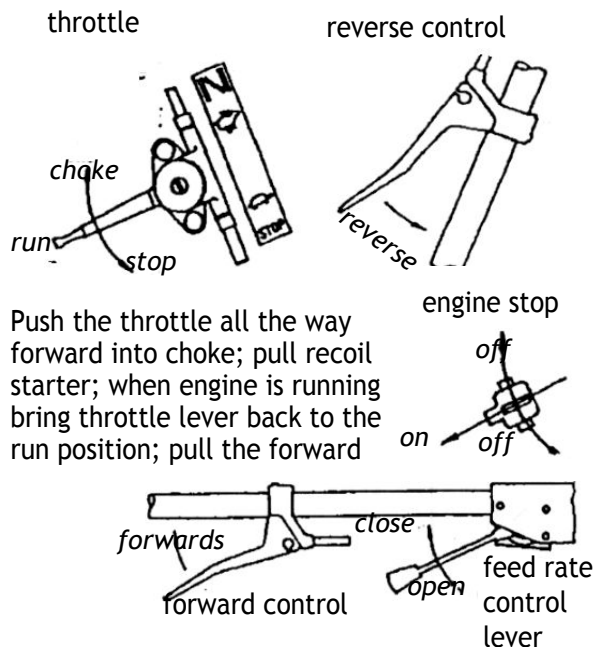
Inspect the tyres daily for cuts and ensure the tyre pressure is maintained at 26lbs/in² (1.7 bar).

Never drop top dressing material from an excessive height into the hopper as this will compact the bottom layers of material and affect the application rate and may damage the mechanism.

Always check the material to ensure no large stones or other objects are loaded into the hopper. Sieve material if necessary.

CONTROLS

Before starting the AutoSpred, first check the engine is filled with oil and fuel. Ensure the axle oil reservoir is full to the correct level. (All capacities for the engine are int he engine book supplied with the machine).



Push the throttle all the way forward into choke; pull recoil starter; when engine is running bring throttle lever back to the run position; pull the forward

or reverse lever on the handle to travel in the desired direction.

OPERATION

When filling the hopper with sand, shut off the engine and make sure the engine cover is in the down position. This prevent material entering the transmission. ensure the feed rate control lever is closed. Calibration pointer on the side of machine should be at A. Fill the hopper with material. DO NOT fill higher than the hopper sides.

To do a test run, set the calibration screw to a pre-selected mark on the calibration screw to a pre-selected marker on the side of the hopper. Put a 1 sq.yd. or 1 sq.metre piece of card or polythene on the ground. Run the machine over the card and weigh the collected material. The metering gate may then be opened or closed and the ground speed increased on decreased to achieve the required spread rate.

When working on severe undulations observe the safe directional transfer fitted to the engine cover ref 33574

This machine has 3 wheels and a lot of weight in the hopper when full so care must be taken not

to overbalance the machine.

before starting work inspect the machine for damage or wear to working parts

SAFETY HINTS

ALWAYS

read the operating instructions carefully and understand the controls before commencing work.

respect powered machines, always keep hands and feet clear of moving parts

switch off the power before making adjustments or repairs and never lift or carry a machine whilst any parts are moving.

be extra careful when using petrol. danger - no smoking or naked lights.

NEVER

allow unauthorised persons to handle machines in any way at any time

fit safety guards and make sure they are correctly in position. they are supplied for your protection

SPECIFICATION

Model ref	ASD/33	
Overall width	99cm	39ins
Working width	83cm	33ins
Length	1.90m	75ins
Height	1.06m	42ins
Weight	254 kg	588 lbs
Hopper capacity	0.26 cu.m	9 cu.ft
Engine	11.5 hp Briggs & Stratton i.c	
Speed	6.4 kmh max	4.00 mph max
Ground coverage	37.5m x 37.5m	41 yds x 41 yds
Bowling green	completed in 40 minutes	
Spreading rates	infinetely variable up to	
(heavy sand)	5.8 kg/m ²	10.2 lbs/yd ₂

SISIS CONTACT TELEPHONE NUMBERS

Sales	01625 503030
Email all departments	info@sisis.com
Fax all departments	01625 427426



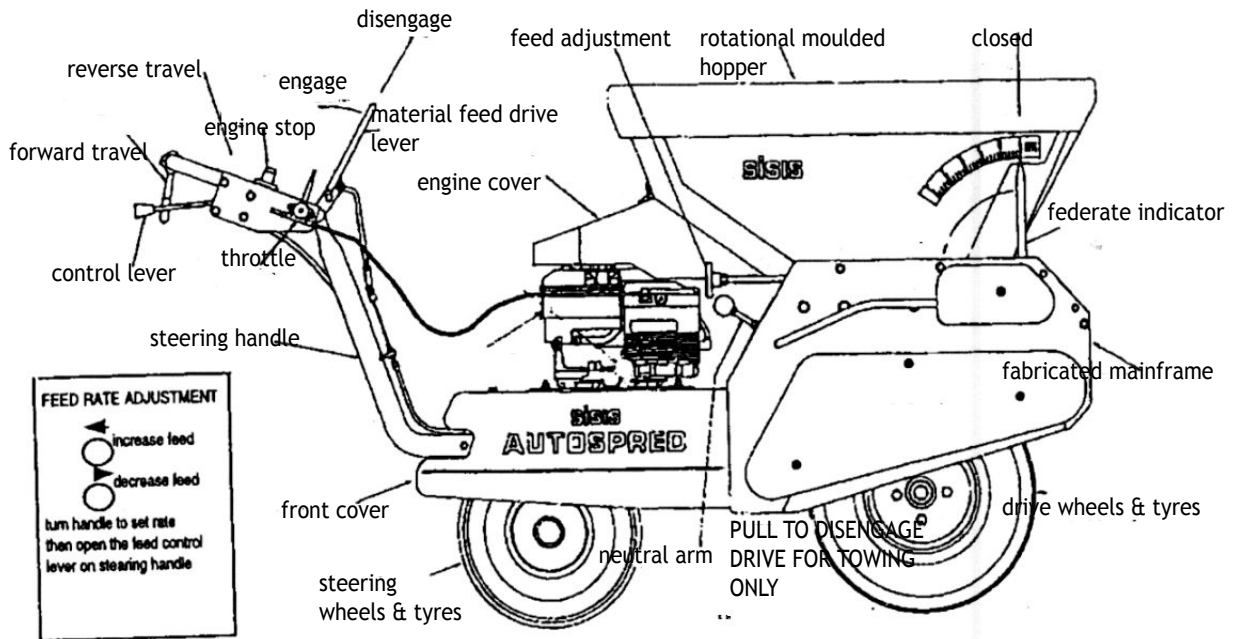
PARTS LIST & DRAWINGS

SISIS EQUIPMENT (Macclesfield) LIMITED, Hurdsfield, Macclesfield, Cheshire Sk10 2LZ, England
Tel (01625) 503030 Fax (01625) 427426 Email info@sisis.com Website www.sisis.com

AUTOSPRED

MACHINE REFERENCE	ASD/33
SERIAL NUMBER
CN CODE	8432 40 10

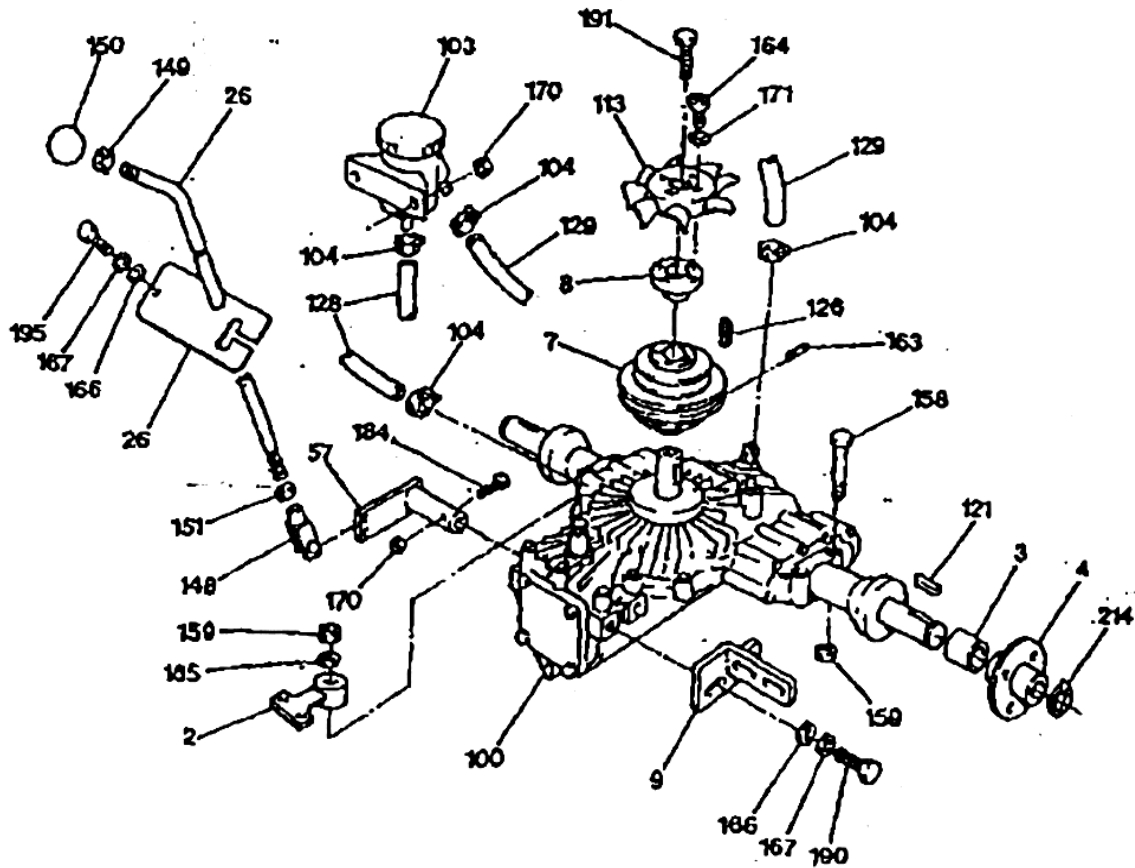
SPARES HOTLINE 01625 503030
Website www.sisis.com

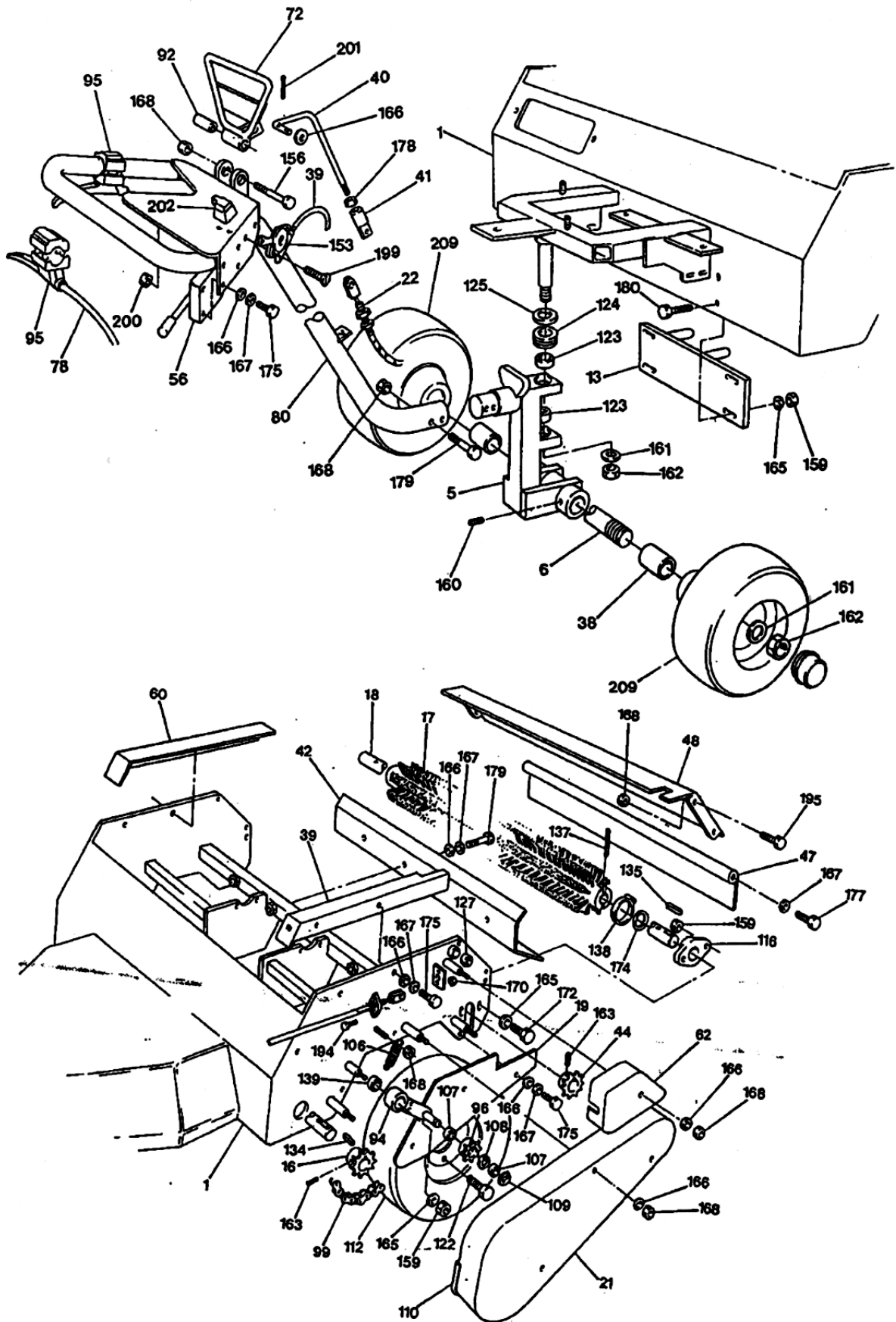


item	part	description	qty	item	part	description	qty
1	33008	main frame	1	37	34086	engine pulley	1
3	32974	spacer	2	38	33293	spacer	2
4	32973	wheel hub	2	39	33299	throttle cable	1
5	33166	wheel bracket	1	40	33252	over centre lever	1
6	33292	wheel shaft	1	41	33250	adjuster	1
7	34085	pulley axle	1	42	33092	shield	1
8	33200	fan spacer	1	43	33002	drive shaft	1
9	33192	axle bracket	1	44	33094	pinion	1
				45	33282	pivot bracket flap	1
				46	33221	belt tensioner arm	1
				47	33045	control flap	1
				48	33052	cross piece	1
13	33580	gearbox bracket	1	49	33056	pivot shaft	1
14	33235	gearbox pulley	1	50	33054	spacer	1
15	33579	gearbox drive shaft	1	51	33055	handle pivot bracket	1
16	33217	pinion	1				
17	32970	brush	1	53	33058	front rubber seal	1
18	32971	brush shaft	1	54	33283	transfer	3
19	33165	chain cover	1				
20	33009	jockey tensioner	1	56	33388	cable control	1
21	33060	drive guard	1	57	33363	neutral arm	1
22	33294	belt tensioner cable	1	58	33365	control rod	1
23	32996	feed plate assembly	1	59	33357	cover LH	1
24	33127	hopper support RH	1	60	33358	cover RH	1
25	33126	hopper support LH	1	61	33369	adjustment bar	1
26	33224	inspection cover	1	62	33368	cable adj. guard	1
27	32990	hopper assembly	1	63	33383	feed rate label	1
28	33264	hopper side seal	2	64	33384	caution label	1
29	33033	clamp bar	2	65	33385	netural label	1
30	33263	rubber skirt	1	66	33370	adjustable stop	1
31	33032	clmap bar	2				
32	33031	hopper side bracket	1				
33	33256	hopper side bracket	1				
34	33472	cntrol gate	1				
35	33186	front cover	1				
36	33222	engine mounting plate	1	72	33463	drive lever	1

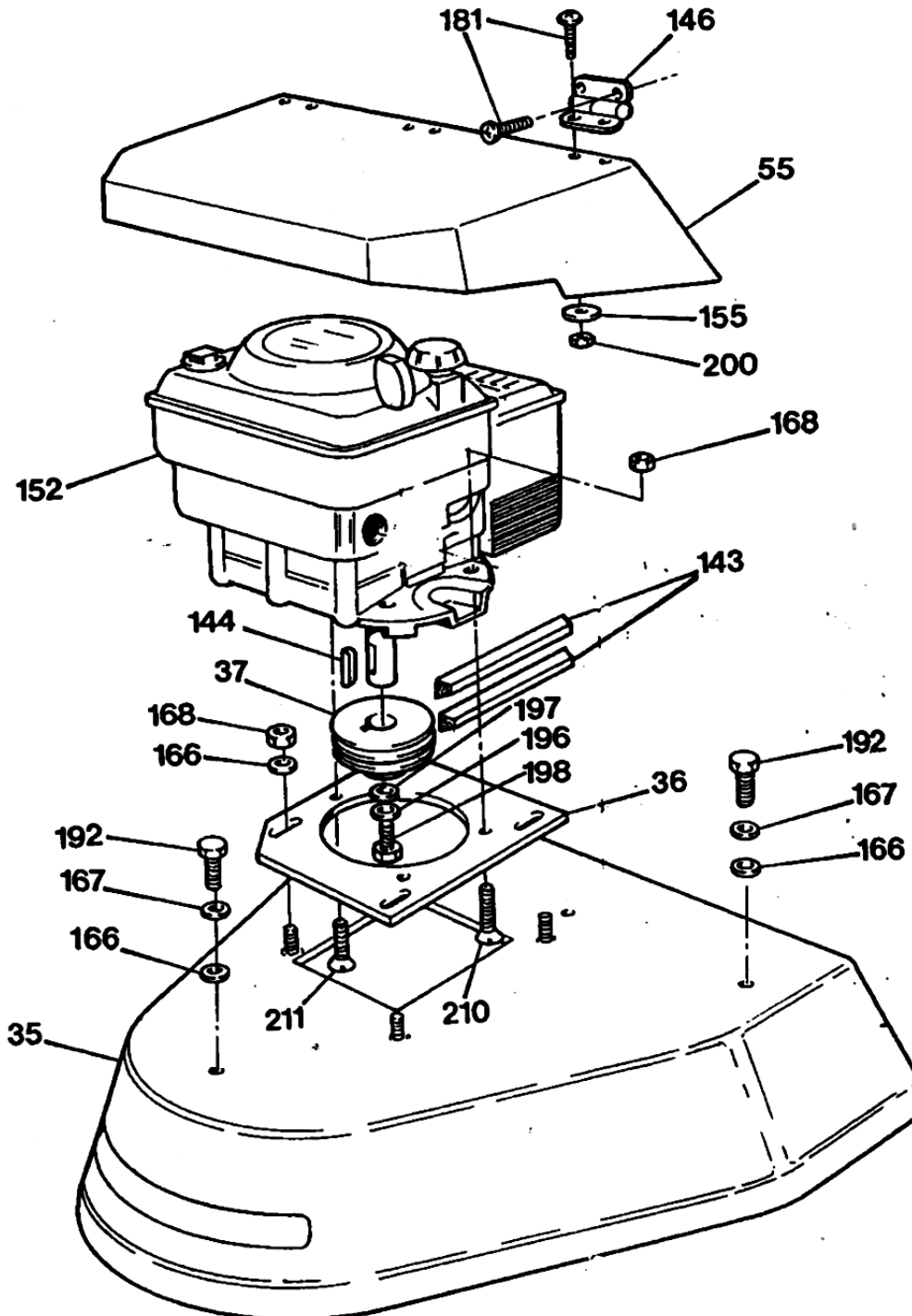
<i>item</i>	<i>part</i>	<i>description</i>	<i>qty</i>	<i>item</i>	<i>part</i>	<i>description</i>	<i>qty</i>
74	33464	label	1	134	8030	parallel key	1
75	33465	label	1	135	8035	parallel key	1
76	33466	controls label	1	136	8165	parallel key	2
77	33467	feed adjustment label	1	137	8304	sel lok pin	2
78	33468	forward control cable	1	138	8457	jubilee clip	2
79	33469	reverse control cable	1	139	8158	oilite bearing	5
80	33066	control handle	1	140	1948	grease nipple	6
81	33057	feed rate flap	1	141	2990	vee belt	1
82	33010	jockey tensioner arm	1	142	8295	flat idler	1
				143	21602	vee belt	2
				144	1013	parallel key	1
84	33475	pirority direction label	1	145	1/1139	bolts	4
85	33574	warning transfer	1	146	20797	door positioning hinge	3
86	31094	collar and stud	1	147	32000	spring	1
87	31081	pinion and stud	1	148	1878	clevis pin	1
88	31273	spacer	4	149	1235	full nut	1
89	31271	bearing link arm	2	150	1015	round knob	1
				151	20214	half nut	1
91	32744	transfer	1	152	22032	engine 11.5hp	1
92	30963	drive lever pivot shaft	1	153	20052	throttle	1
93	1480	standard nameplate	1	154	1/1200	countersunk setscrew	4
				155	8303	penny washer	12
95	1442	control lever	2	156	1/1116	bolt	1
96	6189	pinion	1	157	1/1111	setscrew	2
97	8283	tension spring	2	158	1/1133	bolt	4
98	20197	chain	1	159	1/1223	nyloc nut	45
99	8063	chain	1	160	8153	socket setscrew	10
100	20612	hydrostatic axle	1	161	1/1079	plain washer	3
				162	1/1231	nyloc nut	3
103	20664	reservoir	1	163	1989	socket setscrew	11
104	8967	jubilee clip	4	164	1/1097	setscrew	6
105	20778	gearbox	1	165	1/1073	plain washer	47
106	8042	tension spring	3	166	1/1072	plain washer	37
107	8173	ball bearing	4	167	1/1062	spring washer	13
108	9177	internal circlip	2	168	1/1220	nyloc nut	46
109	8175	external circlip	2	169	1/1108	bolt	1
110	3171	rubber strip edging	1	170	1/1218	nyloc nut	35
111	8190	internal circlip	4	171	1/1071	plain waser	31
112	20783	wheel and tyre	2	172	1/1647	setscrew	20
113	20663	fan	1	173	20792	coach bolt	8
114	1044	split pin	4	174	1/1082	plain washer HP	3
115	1919	ball bering	8	175	1/1039	setscrew	7
116	8299	bolt	2	176	1/1104	setscrew	1
117	5623	ball bearing	4	177	1/1647	setscrew	5
118	8134	external circlip	4	178	1/1221	half nut	7
119	8189	external circlip	4	179	1/1112	bolts	6
120	1696	pop rivet	6	180	1/1119	stscrew	4
121	1010	parallel key	2	181	8600	cross point dome head	14
122	7094	wheel bolts	8	182	1/1216	half nut	12
123	8129	oilite bearing	2	183	1/1060	spring washer	12
124	8047	ball thrust	1	184	20279	setscrew	12
125	1/1083	washer	1	185	1/1061	spring washer	6
126	20670	wide key	1	186	1220	nlo cnut	1
128	20660	tubing	1	187	1879	hand wheel	1
129	20660	tubing	1	188	1/1081	plain washer	4
130	20125	parallel key	1	189	1/1888	castle nut	4
131	1934	parallel key	1	190	20786	cap head setscrew	4
132	8429	coach bolt	2	191	20787	cap head setscrew	1
133	8032	bearing	3	192	1/1105	setscrew	5

193	20279	countersunk setscrew	8	205	4112	transfer	1
194	1/1096	setscrew	28	206	1990	sel lik pin	1
195	1/1118	setscrew	14	207	1/1094	setscrew	2
196	1/1063	spring washer	9	209	20796	wheel and tyre	2
197	8132	washer	1	210	20816	countersunk setscrew	2
198	1247	setscrew	1	211	20817	countersunk setsrew	1
199	9774	countersunk setscrew	2	212	1223	nyloc nut	1
200	1/1217	nyloc nut	4	213	20231	kill switch	1
201	1040	split pin	2				
202	1394	stop switch	1				
203	70534	half nut LH	1	216	21599	exhaust nut	2
204	4098	Union Jack transfer	2				
item	part	description	qty				

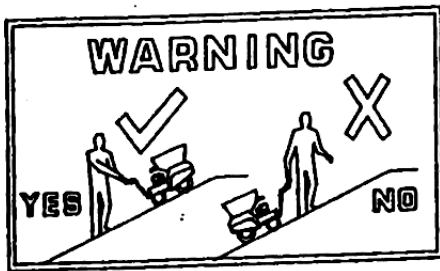




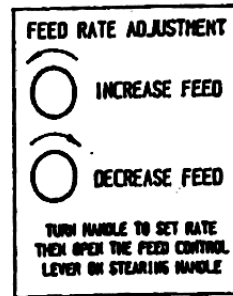
Engine View as from September 2004
Engine Item no 152 Part Number 22032



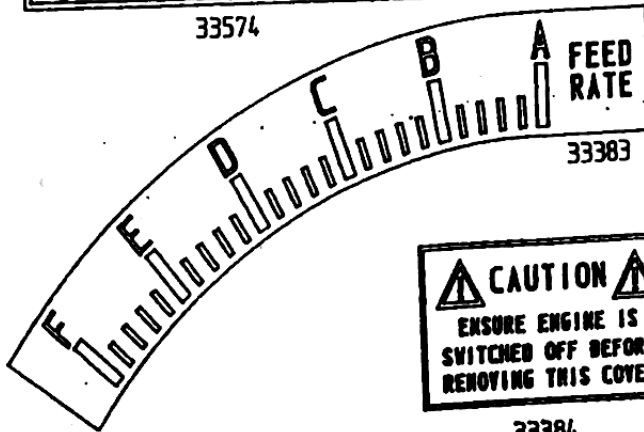
The following Decals are affixed to your SISIS machine for your safety and should NOT be removed or obliterated.
 Replacement decals can be obtained from SISIS Equipment (Macclesfield) Limited



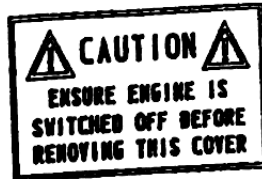
33574



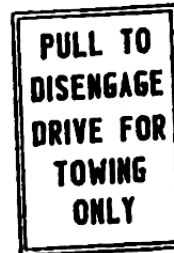
33467



33383



33384



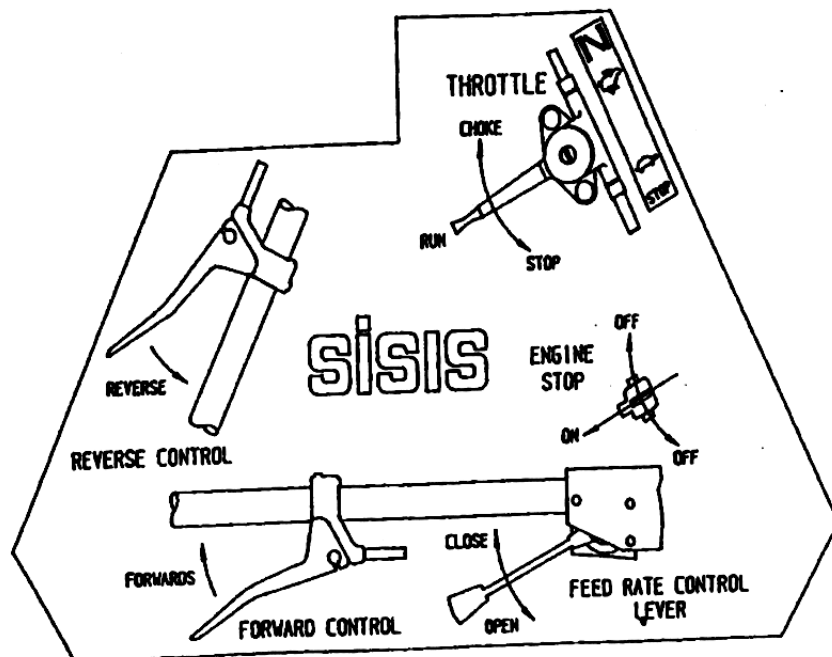
33385



33465



33464



33466

Method Used

RMS Vibration Test Laboratory

Machine Name

AutoSpred

Machine Reference

ASD/33

Engine

Briggs & Stratton

Vibration Level

Static engine only 4.5ms²
Working no material 11.5ms²**ALL READINGS TAKEN AT FULL REVS****PERSONAL SAFETY EQUIPMENT**

Use Safety Glasses

Use Breathing Mask

Use Safety Gloves

Use Ear Protectors

Use Safety Boots

SISIS EQUIPMENT (Macclesfield) LIMITEDHurdsfield, Macclesfield, Cheshire SK10 2LZ, England Tel 01625 503030 Fax 427426 Email info@sisis.com
Web www.sisis.com